



A GLOBAL PROVIDER OF ENHANCED THERMAL CUTTING SOLUTIONS

EX-TRA[®]FIRE

PLASMA CUTTING SYSTEMS CATALOG



WWW.THERMACUT.COM
SALES@THERMACUT.CZ

Rev 1.13_EN

FROM THE GARAGE TO THE SHIPYARD

"A successful product begins with a simple idea". The idea was to create a plasma cutting power supply. Criteria were set precisely. It has to be powerful, versatile, easy to operate, durable and portable.

AND WE CREATED IT.
IT'S CALLED
THE **EX-TRAFIRE®**

Last update of this page: 09/06/2021. See Revision history for details.

EX-TRAFIRE® HD LINE

EX-TRAFIRE®45HD

System SPECIFICATION	6-11
FHT-EX®45TT PLASMA TORCH	12-17

EX-TRAFIRE®65HD

System SPECIFICATION	18-23
-----------------------------	-------

EX-TRAFIRE®85HD

System SPECIFICATION	24-29
-----------------------------	-------

EX-TRAFIRE®105HD

System SPECIFICATION	30-35
-----------------------------	-------

FHT-EX®105TT PLASMA TORCH

Hand Torch SPECIFICATION	38-42
Machine Torch SPECIFICATION	43-47

EX-TRAFIRE®125HD

System SPECIFICATION	48-53
-----------------------------	-------

FHT-EX®125TT PLASMA TORCH

Hand Torch SPECIFICATION	56-59
Machine Torch SPECIFICATION	60-63

EX-TRAFIRE® PLASMA SYSTEMS

TABLE OF CONTENTS

EX-TRAFIRE® SD LINE

EX-TRAFIRE®SD

EX-TRAFIRE® SD LINE	66-67
----------------------------	-------

EX-TRAFIRE®30H

System SPECIFICATION	70-73
FHT-EX®30H PLASMA TORCH	74-77

EX-TRAFIRE®40SD

System SPECIFICATION	80-81
FHT-EX®40H/M PLASMA TORCH	82-87

EX-TRAFIRE®45SD

System SPECIFICATION	90-93
FHT-EX®45TT H/M PLASMA TORCH	94-99

EX-TRAFIRE®55SD

System SPECIFICATION	102-105
-----------------------------	---------

EX-TRAFIRE®75SD

System SPECIFICATION	108-111
-----------------------------	---------

EX-TRAFIRE®100SD

System SPECIFICATION	114-117
-----------------------------	---------

FHT-EX®105RTX PLASMA TORCH

Hand Torch SPECIFICATION	120-123
Machine Torch SPECIFICATION	124-127

ACCESSORIES

EX-TRAFIRE® ACCESSORIES	128
--------------------------------	-----

REVISION HISTORY

129

Last update of this page: 18/07/2023. See Revision history for details.

A background image of an industrial cutting machine. A blue robotic arm with "YASKAWA MOTOMAN" and "PACUT EX-TRA" branding is positioned over a work area. A hand is holding a metal plate with a circular hole. The machine's base and various components are visible in the foreground and background.

EX-TRA

INDUSTRIAL CUTTING. HEAVY-



EX-TRAFIRE[®] HD

HEAVY DUTY PERFORMANCE.



EX-TRAFIRE[®] 105HD

EX-TRAFIRE[®] 45HD

INDUSTRIAL CUTTING. HEAVY-DUTY PERFORMANCE.

SOLUTIONS / INDUSTRIES



Training
and education



General
fabrication



Craft, hobby
and non-industrial



Structural

Last update of this page: 29/10/2021. See Revision history for details.



EX-TRAFIRE® 45HD



IMPRESSIVE PERFORMANCE



- + Extremely high cutting speed
- + Maximum cutting quality
- + Also ideal for automated processes

AUTOMATIC SETTINGS



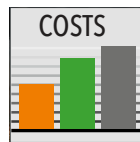
- + Cutting gas media, electricity and pilot current
- + Compensation for pressure drops
- + Fewer operating errors, better cutting quality

READY FOR INDUSTRY 4.0



- + CAN Bus interface (optional)
- + RS 485 interface (optional)
- + Easy monitoring
- + Expandable and updatable to remain extremely future-proof

OPTIMAL COST-EFFECTIVENESS



- + Low investment costs
- + 20 % longer consumable lifetime
- + Low operating costs
- + Increased productivity

Last update of this page: 29/10/2021. See Revision history for details.

EX-TRAFIRE® 45HD

SPECIFICATIONS

	SINGLE PHASE		THREE PHASE
Output current	10-25 A @ 120 VAC	10-45 A @ 230 VAC	10-45 A
Modes	cutting / grid cutting / gouging / marking		
Duty cycle	40 % @ 25 A, 100 % @ 16 A	50 % @ 45 A, 100 % @ 32 A	80 % @ 45 A, 100 % @ 40 A
Rated output voltage [VDC]	145		
Severance cutting capacity [mm]	25+*		
Piercing capacity [mm]	10 ⁽¹⁾		
Recommended cutting capacity [mm]	12 ⁽¹⁾		
Plasma gas	compressed air / nitrogen / argon (marking)		
Air flow [lpm/bar]	90/4.5		
CNC interface / CAN BUS interface	optional / optional		
Preadjusted voltage divider ratio	50:1		
Input voltage	120 VAC ± 15 %	230 VAC ± 15 %	3 x 400 VAC ± 15 % (CE)
Frequency [Hz]	50/60		
Dimensions (L×H×W) [mm]	469×228×177		
Weight [kg]	12.7		
Certification depending on region	CE / C-TICK / CCC		
Maximum input pressure [bar/psi]	10/145		
Protection level	IP23S		
Insulation class	F		
Type of hand torch	FHT-EX®45TTH		
Type of machine torch	FHT-EX®45TTM		

⁽¹⁾Values for low alloy steel, E. G. MS S235JR

4 DIFFERENT OPERATION MODES

The plasma cutting systems in the EX-TRAFIRE®HD range are the absolute specialists in meeting tough demands in continuous operation. The mobile EX-TRAFIRE® 45HD plasma cutting system is the ideal solution for anyone looking for a robust, extremely high-performance and cost-effective starter model.



Last update of this page: 10.05.2022. See Revision history for details.

EX-TRAFIRE® 45HD

ORDERING INFORMATION

Description	Length	Part No.
MANUAL PLASMA CUTTING SYSTEMS		
EX-TRAFIRE®45HD/CE/3x400 V Hand System (STD-equipped**)/FHT-EX®45TTH 5m/ H Starter Kit	5 m	EX-2-010-031
EX-TRAFIRE®45HD/CE/3x400 V Hand System (STD-equipped**)/FHT-EX®45TTH 8m/ H Starter Kit	8 m	EX-2-010-032
EX-TRAFIRE®45HD/CE/3x400 V Hand System (STD-equipped**)/FHT-EX®45TTH 15m/ H Starter Kit	15 m	EX-2-010-033
EX-TRAFIRE®45HD/CE/1x110/230 V Hand System (STD-equipped**)/FHT-EX®45TTH 5m/ H Starter Kit	5 m	EX-2-010-041
EX-TRAFIRE®45HD/CE/1x110/230 V Hand System (STD-equipped**)/FHT-EX®45TTH 8m/ H Starter Kit	8 m	EX-2-010-042
EX-TRAFIRE®45HD/CE/1x110/230 V Hand System (STD-equipped**)/FHT-EX®45TTH 15m/ H Starter Kit	15 m	EX-2-010-043
EX-TRAFIRE®45HD/CE/1x120/240V Hand System (STD-equipped**)/FHT-EX®45TTH 5m/H Starter Kit/Including Transport Case	5 m	EX-2-010-047
EX-TRAFIRE®45HD/CE/1x120/240V Hand System (STD-equipped**)/FHT-EX®45TTH 8m/H Starter Kit/Including Transport Case	8 m	EX-2-010-048
EX-TRAFIRE®45HD/CE/1x120/240V Hand System (STD-equipped**)/FHT-EX®45TTH 15m/H Starter Kit/Incl. Transport Case	15 m	EX-2-010-049
EX-TRAFIRE®45HD/CE/3x400V Hand System (STD-equipped**)/FHT-EX®45TTH 5m/H Starter Kit/Including Transport Case	5 m	EX-2-010-050
EX-TRAFIRE®45HD/CE/3x400V Hand System (STD-equipped**)/FHT-EX®45TTH 8m/H Starter Kit/Including Transport Case	8 m	EX-2-010-051
EX-TRAFIRE®45HD/CE/3x400V Hand System (STD-equipped**)/FHT-EX®45TTH 15m/H Starter Kit/Including Transport Case	15 m	EX-2-010-052
MECHANIZED PLASMA CUTTING SYSTEMS		
EX-TRAFIRE®45HD/CE/3x400 V Machine System (Fully-equipped*)/FHT-EX®45TTM 5m/M Starter Kit	5 m	EX-2-011-031
EX-TRAFIRE®45HD/CE/3x400 V Machine System (Fully-equipped*)/FHT-EX®45TTM 8m/M Starter Kit	8 m	EX-2-011-032
EX-TRAFIRE®45HD/CE/3x400 V Machine System (Fully-equipped*)/FHT-EX®45TTM 15m/M Starter Kit	15 m	EX-2-011-033
EX-TRAFIRE®45HD/CE/1x110/230 V Machine System (Fully-equipped*)/FHT-EX®45TTM 5m/M Starter Kit	5 m	EX-2-011-041
EX-TRAFIRE®45HD/CE/1x110/230 V Machine System (Fully-equipped*)/FHT-EX®45TTM 8m/M Starter Kit	8 m	EX-2-011-042
EX-TRAFIRE®45HD/CE/1x110/230 V Machine System (Fully-equipped*)/FHT-EX®45TTM 15m/M Starter Kit	15 m	EX-2-011-043
EX-TRAFIRE®45HD/CE/1x110/230 V Machine System (STD-equipped**)/FHT-EX®45TTM 5m/M Starter Kit	5 m	EX-2-013-001
EX-TRAFIRE®45HD/CE/1x110/230 V Machine System (STD-equipped**)/FHT-EX®45TTM 8m/M Starter Kit	8 m	EX-2-013-002
EX-TRAFIRE®45HD/CE/1x110/230 V Machine System (STD-equipped**)/FHT-EX®45TTM 15m/M Starter Kit	15 m	EX-2-013-003
EX-TRAFIRE®45HD/CE/3x400 V Machine System (STD-equipped**)/FHT-EX®45TTM 5m/M Starter Kit	5 m	EX-2-013-004
EX-TRAFIRE®45HD/CE/3x400 V Machine System (STD-equipped**)/FHT-EX®45TTM 8m/M Starter Kit	8 m	EX-2-013-005
EX-TRAFIRE®45HD/CE/3x400 V Machine System (STD-equipped**)/FHT-EX®45TTM 15m/M Starter Kit	15 m	EX-2-013-006
PLASMA CUTTING UNITS		
EX-TRAFIRE® 45HD/CE/1x110/230 V power supply unit (Fully-equipped*)		EX-2-001-001
EX-TRAFIRE® 45HD/CE/3x400 V power supply unit (Fully-equipped*)		EX-2-001-002
EX-TRAFIRE® 45HD/CE/1x110/230 V power supply unit (STD-equipped**)		EX-2-003-001
EX-TRAFIRE® 45HD/CE/3x400 V power supply unit (STD-equipped**)		EX-2-003-003

* Fully-equipped=CNC interface & Serial interfaceport (CAN bus)

** STD-equipped=CNC interface

AVAILABLE BULK PACKS

Description	Pcs	Part No.
Bulk Pack-Electrode - 25 pcs	1	EX-2-434-201
Bulk Pack-Nozzle - 25 pcs	1	EX-2-435-201
Bulk Pack - Hand (Contact) Shield - 18 pcs	1	EX-2-436-201
Bulk Pack - Machine Shield - 18 pcs	1	EX-2-437-201

ACCESSORIES

Description	Pcs	Part No.
DN 7.2 ES Quick Connect Plug with male thread G 1/4"	1	EX-0-802-001
DN 7.2 ES Quick Connect Coupling with male thread G 1/4"	1	EX-0-802-002
Grease 25 ml	1	EX-0-805-001
Filter-EX Compressed Air Filter	1	EX-0-804-001
Filter-EX Air Filter Cartridge	8	EX-0-804-002

Last update of this page: 20/09/2022. See Revision history for details.

EX-TRAFIRE® 45HD



FRONT VIEW



BACK VIEW



SIDE VIEW

Last update of this page: 29/10/2021. See Revision history for details.

FHT-EX® 45TT



MODERN AND CAPABLE TORCH



The high-performant FHT-EX®45TT H/M hand and machine torches are ideal for meeting tough demands in continuous operation. These torches are optimally designed for use with EX-TRAFIRE®45HD power supplies and are suitable for cutting, gouging, grid-cutting and marking. They can cut plate thickness of up to 25+ mm and more precisely and quickly.

Thanks to the THERMACUT® Torch Connection System (TCS), changing the torch is a quick and easy process. The powerful torches are the result of decades of experience in the field of plasma cutting. They feature an extremely robust and durable design in which all consumables can be replaced quickly and easily.

BENEFITS

- High-performant torches for mechanised applications and handheld use
- Ergonomic handheld torches for safe and reliable holding and guiding in all positions
- Compact and flexible for handheld applications, even in the case of tight radii or gouging of fillet welds
- 100 % duty cycle at 45 A, ideal for continuous use
- Ideal for plate thicknesses of up to 25 mm and more with high power reserves
- Consumables with an extended lifetime
- Quick and tool-free replacement of consumables
- Piercing 10+ mm
- Perfectly designed for use with EX-TRAFIRE®45HD power supplies

Last update of this page: 29/10/2021. See Revision history for details.

FHT-EX® 45TTH

HAND TORCH ASSEMBLY



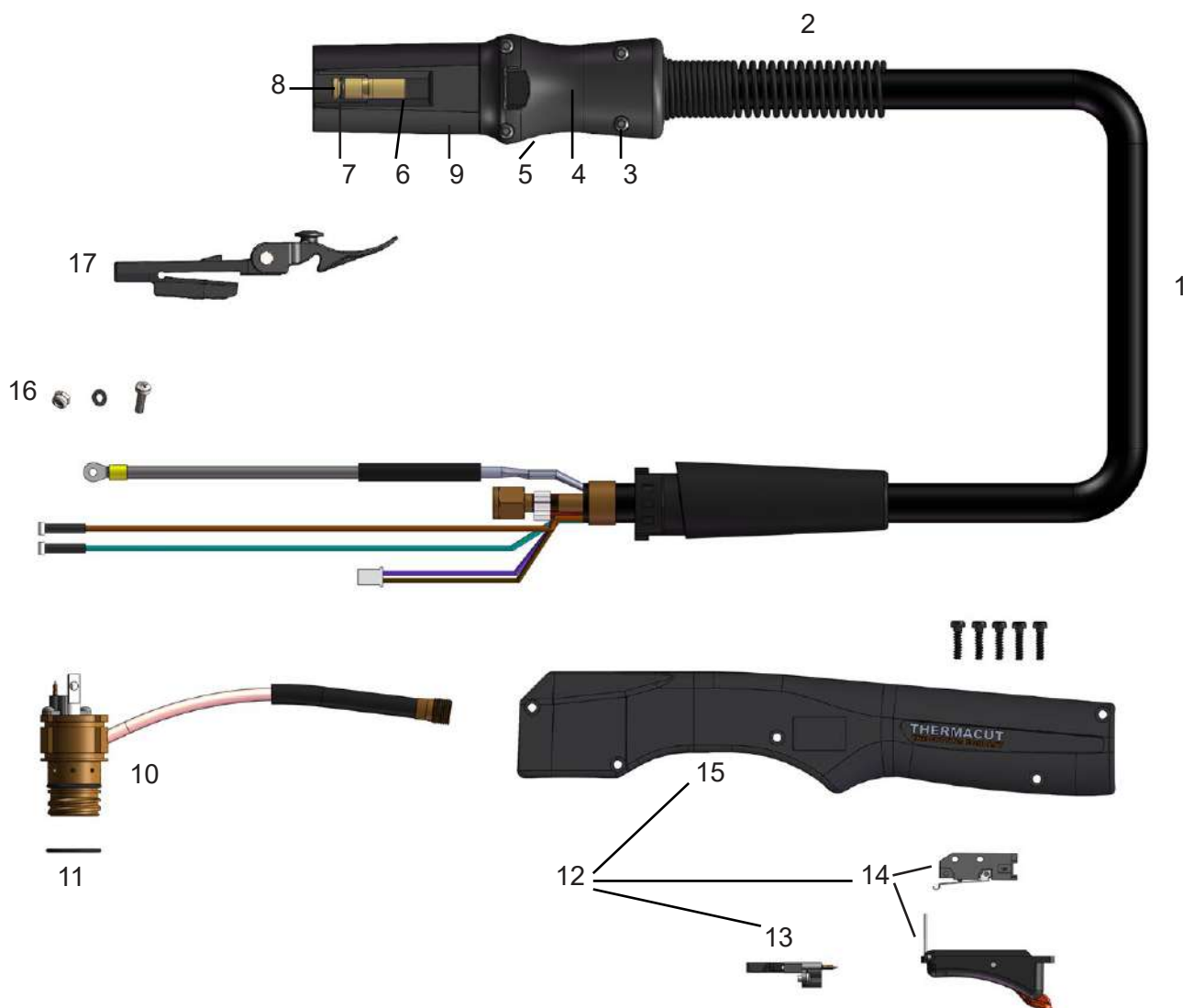
Item	Part No.	Description	Pcs
1.	EX-2-133-001	FHT-EX45®TTH DEMO Hand Torch Assembly w/consumables/TCS13	1
	EX-2-101-001	FHT-EX45®TTH Hand Torch Assembly w/o consumables w/5m Lead/TCS13	1
	EX-2-103-001	FHT-EX45®TTH Hand Torch Assembly w/o consumables w/8m Lead/TCS13	1
	EX-2-106-001	FHT-EX45®TTH Hand Torch Assembly w/o consumables w/15m Lead/TCS13	1
2.	EX-0-321-003	Latch with Key Assembly	1

ⓘ LATCH WITH KEY IS NOT CONTENT OF TORCHES ABOVE. IF YOU NEED IT, YOU HAVE TO ORDER SEPARATELY.

Last update of this page: 29/10/2021. See Revision history for details.

FHT-EX® 45TTH

HAND TORCH COMPONENTS



Item	Part No.	Description	Pcs	Item	Part No.	Description	Pcs
1.	EX-2-331-001	FHT-EX®45TTH Hand Torch Lead Replacement Kit 5m Lead/TCS13	1	9.	EX-0-323-001	TCS13 Plug Body	1
1.	EX-2-333-001	FHT-EX®45TTH Hand Torch Lead Replacement Kit 8m Lead/TCS13	1	10.	EX-2-302-001	Hand Torch Body FHT-EX®45TTH	1
1.	EX-2-336-001	FHT-EX®45TTH Hand Torch Lead Replacement Kit 15m Lead/TCS13	1	11.	EX-5-431-050	O-Ring (fitted on the torch body)	2
2.	EX-5-318-001	TCS Plug Spring Stain Relief	1	12.	EX-2-314-001	FHT-EX®45TTH Hand Torch Handle Replacement Kit	1
3.	EX-0-325-015	TCS Clam Shell Screw	1	13.	EX-2-305-001	Cap-sensor Replacement Kit with Screws/ Hand Torch	1
4.	EX-0-325-002	TCS Clam Shell Upper	1	14.	EX-2-313-001	Safety Trigger with start switch	1
5.	EX-0-325-001	TCS Clam Shell Lower	1	15.	EX-2-308-001	Hand Torch Handle with Screws	1
6.	EX-0-325-010	Retaining Ring (Outer circlip ring)	1	16.	EX-5-372-010	Cathode mounting kit	1
7.	EX-0-325-009	O-Ring (fitted in the TCS plug)	1	17.	EX-0-321-003	Latch w/Key Assembly	1
8.	EX-0-325-005	Male Crimp Pin for TCS Plug	1				

Last update of this page: 29/10/2021. See Revision history for details.

FHT-EX® 45TTM

MACHINE TORCH ASSEMBLY



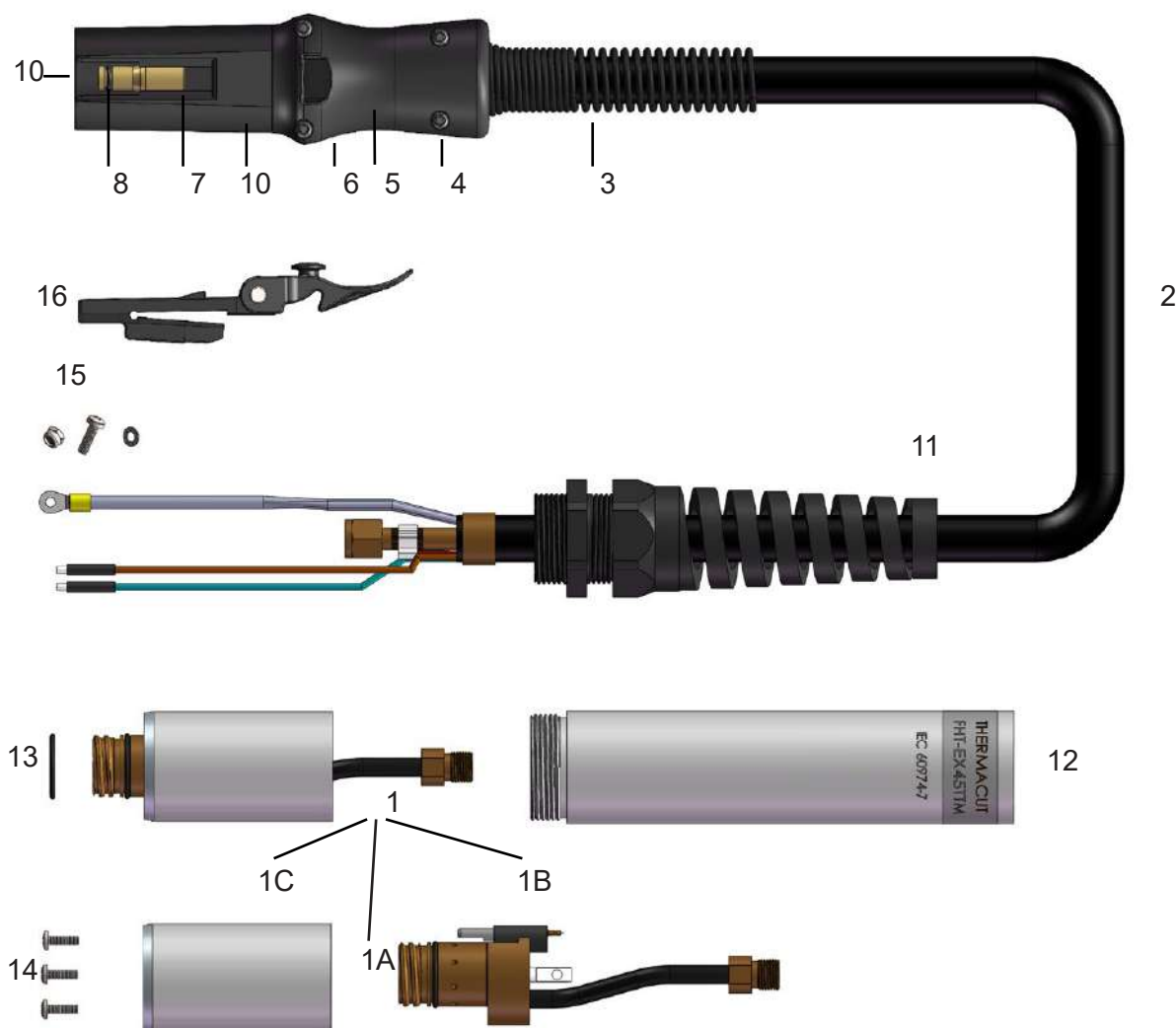
Item	Part No.	Description	Pcs
1.	EX-2-233-001	FHT-EX®45TTM DEMO Machine Torch Assembly w/consumables/TCS13	1
	EX-2-202-001	FHT-EX®45TTM Machine Torch Assembly w/o consumables w/5 m Lead/TCS13	1
	EX-2-204-001	FHT-EX®45TTM Machine Torch Assembly w/o consumables w/8 m Lead/TCS13	1
	EX-2-207-001	FHT-EX®45TTM Machine Torch Assembly w/o consumables w/15 m Lead/TCS13	1
2.	EX-0-321-003	Latch with Key Assembly	1

⊕ LATCH WITH KEY IS NOT CONTENT OF TORCHES ABOVE. IF YOU NEED IT, YOU HAVE TO ORDER SEPARATELY.

Last update of this page: 29/10/2021. See Revision history for details.

FHT-EX® 45TTM

MACHINE TORCH COMPONENTS

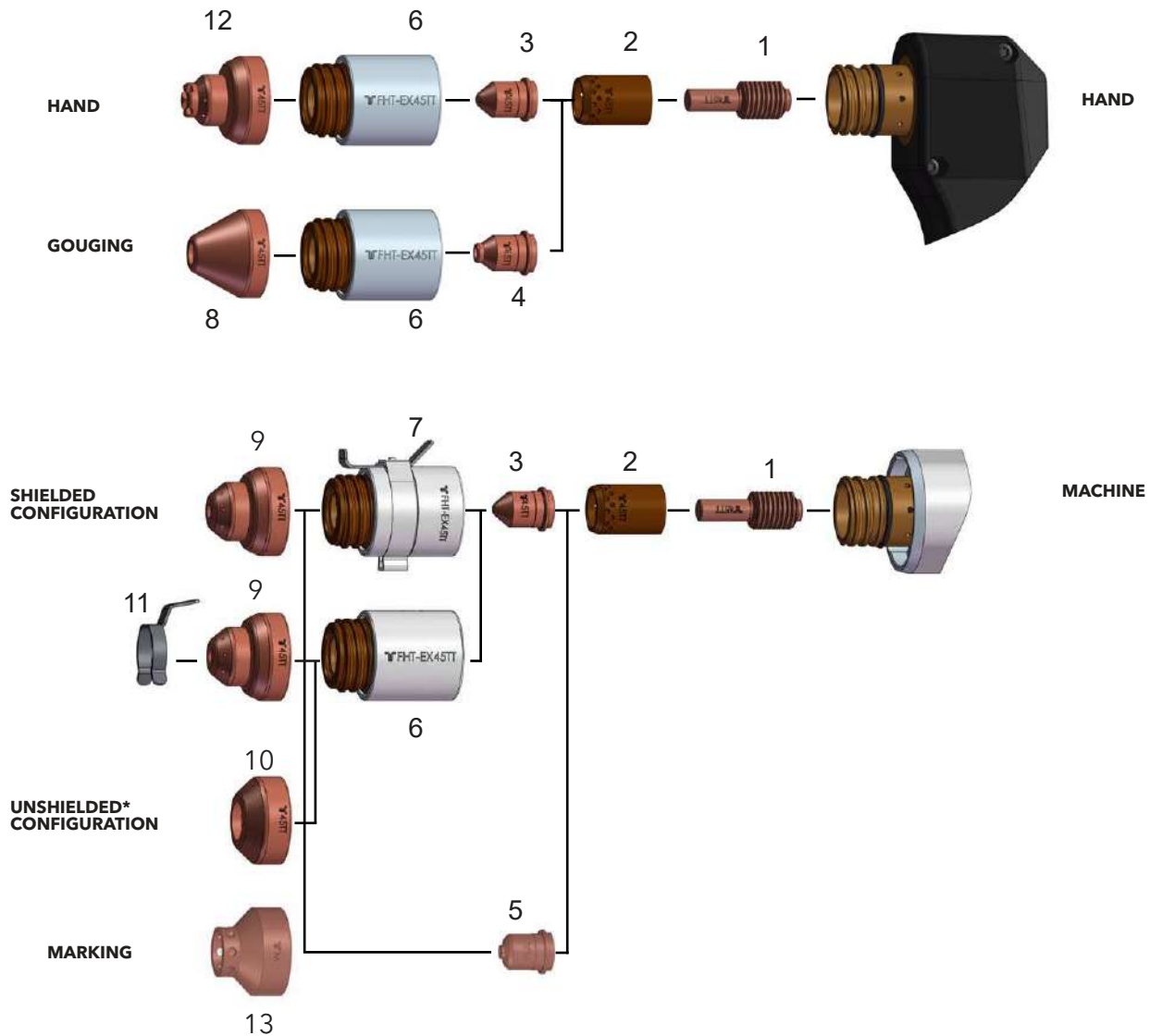


Item	Part No.	Description	Pcs	Item	Part No.	Description	Pcs
1.	EX-2-301-001	Machine Torch Body Assembly FHT-EX®45TTM	1	7.	EX-0-325-010	Retaining Ring (Outer circlip ring)	1
1a.	EX-2-301-002	Machine Torch Body FHT-EX®45TTM	1	8.	EX-0-325-009	O-Ring (fitted in the TCS plug)	1
1b.	EX-5-304-001	Cap Sensor Replacement Kit with Screws/Machine Torch	1	9.	EX-0-325-005	Male Crimp Pin for TCS Plug	1
1c.	EX-5-306-002	Torch Mounting Sleeve (incl. 3 screws)	1	10.	EX-0-323-001	TCS13 Plug Body	1
2.	EX-2-352-001	FHT-EX®45TTM Machine Torch Lead Replacement Kit 5m Lead/TCS13	1	11.	EX-5-317-021	Machine Torch Strain Relief	1
	EX-2-354-001	FHT-EX®45TTM Machine Torch Lead Replacement 8m Lead/TCS13	1	12.	EX-2-306-001	FHT-EX®45TTM Standard Mounting Tube w/o Rack	1
	EX-2-357-001	FHT-EX®45TTM Machine Torch Lead Replacement 15m Lead/TCS13	1	13.	EX-5-431-050	O-Ring (fitted on the torch body)	2
3.	EX-5-318-001	TCS Plug Spring Strain Relief	1	14.	EX-5-372-005	Torch Mounting Screws Kit (incl. 3 screws)	1
4.	EX-0-325-015	TCS Clam Shell Screw Kit (incl. 4 screws)	1	15.	EX-5-372-010	Cathode Mounting Kit	1
5.	EX-0-325-002	TCS Clam Shell Upper	1	16.	EX-0-321-003	Latch w/Key Assembly	1
6.	EX-0-325-001	TCS Clam Shell Lower	1				

Last update of this page: 29/10/2021. See Revision history for details.

CONSUMABLES

HAND / MACHINE TORCH CONSUMABLES



Item	Part No.	Description	Pcs	Item	Part No.	Description	Pcs
1.	EX-2-401-201	Electrode	5	8.	EX-2-419-202	Gouging Shield	1
2.	EX-2-404-201	Swirl ring	1	9.	EX-2-421-201	Machine Shield	1
3.	EX-2-409-201	Nozzle	5	10.	EX-2-423-211	Deflector	1
4.	EX-2-409-202	Gouging nozzle	5	11.	EX-2-428-011	IHS Ohmic Clip	1
5.	EX-2-445-001	Marking Nozzle	5	12.	EX-2-419-201	Hand (contact) Shield	1
6.	EX-2-415-201	Retaining Cap	1	13.	EX-2-445-002	Marking Shield	1
7.	EX-2-415-202	Retaining Cap w/IHS Tab	1				

* IN COUNTRIES FOLLOWING CE STANDARDS, UNSHIELDED CONSUMABLE CONFIGURATION MAY ONLY BE USED IN MECHANIZED TORCH APPLICATIONS.

Last update of this page: 18/01/2022. See Revision history for details.

EX-TRAFIRE® 65HD

INDUSTRIAL CUTTING. HEAVY-DUTY PERFORMANCE.

SOLUTIONS / INDUSTRIES



Automotive
and transportation



Energy



Structural



Education
and Training



Craft, hobby and
non industrial users

Last update of this page: 07/11/2022. See Revision history for details.



EX-TRAFIRE® 65HD



CUTTING
65 A
CURRENT

MATERIAL
38+ mm
THICKNESS

VARIOUS
OPERATION
MODES

IMPRESSIVE PERFORMANCE



- + Extremely high cutting speed
- + Maximum cutting quality, even with long cuts
- + Also ideal for automated processes

READY FOR INDUSTRY 4.0



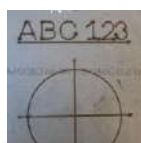
- + Industry leading connectivity
- + CAN / RS 485 / RS 422 Bus interface (optional)
- + Easy monitoring
- + Expandable and updatable

HIGHEST FLEXIBILITY



- + Plate thicknesses up to 38 mm and more
- + For mechanized and manual applications
- + Gouging with high removal rate
- + Suitable for worldwide use

MARKING MODE



- + Automatic gas identification (air, nitrogen, argon)
- + Integrated gas saving function
- + Fine, deep or wide markings
- + Optional smooth marking for applications below 20 A

AUTOMATIC SETTINGS



- + Cutting gas media, electricity and pilot current
- + Compensation for pressure drops
- + Fewer operating errors, better cutting quality

NEW CUTTING TORCH FHT® EX105TT



- + Torch design award winner
- + Optimized ergonomics
- + Relaxed PE and PA cutting
- + 100% duty cycle

Last update of this page: 07/11/2022. See Revision history for details.

EX-TRAFIRE® 65HD

SPECIFICATIONS

Output current [A]	20 - 65
Modes	cutting / grid cutting / gouging / marking
Duty cycle	100 % @ 65 A
Rated output voltage [VDC]	170
Severance cutting capacity [mm]	38+ ⁽¹⁾
Piercing capacity [mm]	20 ⁽¹⁾
Recommended cutting capacity [mm]	25 ⁽¹⁾
Plasma gas	compr. air / nitrogen / argon
Max. Air flow [lpm/bar]	180/5
CNC interface / CAN BUS interface	optional / optional
Preadjusted voltage divider ratio	50:1
Input voltage [VAC]	3 x 400 ± 15 % ⁽²⁾
Frequency [Hz]	50/60
Dimensions (L×H×W) [mm]	560 x 400 x 260
Weight [kg]	20.3
Certification depending on region	CE, C-TICK, CCC, CSA
Maximum input pressure [bar/psi]	10/145
Protection level	IP23S
Insulation class	F
Type of hand torch	FHT-EX®105TTH
Type of machine torch	FHT-EX®105TTM

⁽¹⁾ related to low-alloy steel (mild steel)⁽²⁾ suitable for generator use

4 DIFFERENT OPERATION MODES

The plasma cutting systems in the EX-TRAFIRE®HD range are the absolute specialists in meeting tough demands in continuous operation. The mobile EX-TRAFIRE®65HD plasma cutting system with 100% duty cycle is the perfect solution for demanding heavy duty applications in industry.



Last update of this page: 22/03/2023. See Revision history for details.

EX-TRAFIRE® 65HD

ORDERING INFORMATION

Description	Length	Part No.
MANUAL PLASMA CUTTING SYSTEMS		
EX-TRAFIRE®65HD/CE/3x400 V/STD EQUIPPED/Hand System/FHT-EX®105TTH Torch 5m/Starter Kit	5 m	EX-3-010-051
EX-TRAFIRE®65HD/CE/3x400 V/STD EQUIPPED/Hand System/FHT-EX®105TTH Torch 8m/Starter Kit	8 m	EX-3-010-052
EX-TRAFIRE®65HD/CE/3x400 V/STD EQUIPPED/Hand System/FHT-EX®105TTH Torch 15m/Starter Kit	15 m	EX-3-010-053
MECHANIZED PLASMA CUTTING SYSTEMS		
EX-TRAFIRE®65HD/CE/3x400 V/FULLY EQUIPPED/Machine System/FHT-EX®105TTM STD-NR Torch 8m/Starter Kit	8 m	EX-3-011-014
EX-TRAFIRE®65HD/CE/3x400 V/FULLY EQUIPPED/Machine System/FHT-EX®105TTM STD-NR Torch 15m/Starter Kit	15 m	EX-3-011-015
EX-TRAFIRE®65HD CE 3x400 V/FULLY EQUIPPED/Machine System/FHT-EX®105TTSM Torch 8m/Starter Kit	8 m	EX-3-012-006
EX-TRAFIRE®65HD CE 3x400 V/FULLY EQUIPPED/Machine System/FHT-EX®105TTSM Torch 15m/Starter Kit	15 m	EX-3-012-007
EX-TRAFIRE®65HD/CE/3x400 V/STD EQUIPPED/Machine System/FHT-EX®105TTM STD-NR Torch 8m/Starter Kit	8 m	EX-3-013-002
EX-TRAFIRE®65HD/CE/3x400 V/STD EQUIPPED/Machine System/FHT-EX®105TTM STD-NR Torch 15m/Starter Kit	15 m	EX-3-013-003
EX-TRAFIRE®65HD CE 3x400 V/STD EQUIPPED/Machine System/FHT-EX®105TTSM Torch 8m/Starter Kit	8 m	EX-3-014-002
EX-TRAFIRE®65HD CE 3x400 V/STD EQUIPPED/Machine System/FHT-EX®105TTSM Torch 15m/Starter Kit	15 m	EX-3-014-003
PLASMA CUTTING UNITS		
EX-TRAFIRE®65HD/CE/3x400 V power supply unit/FULLY EQUIPPED		EX-3-001-002
EX-TRAFIRE®65HD/CE/3x400 V power supply unit/STD EQUIPPED		EX-3-003-001

NOTE:

STD (standard) EQUIPPED - CNC-Port

FULLY EQUIPPED - CNC-Port & Serial Interface

AVAILABLE BULK PACKS

Description	Pcs	Part No.
Bulk Pack - Electrode 45-105 A - 25 pcs	1	EX-5-401-061
Bulk Pack - Nozzle Smoothline- 25 pcs	1	EX-5-410-060
Bulk Pack - Nozzle 45 A - 25 pcs	1	EX-5-410-061
Bulk Pack - Nozzle 55/65 A - 25 pcs	1	EX-5-410-063
Bulk Pack - Hand Shield 45-85 A - 18 pcs	1	EX-5-422-041
Bulk Pack - Machine Shield Smoothline - 18 pcs	1	EX-5-422-060
Bulk Pack - Machine Shield 45-85 A - 18 pcs	1	EX-5-422-061

ACCESSORIES

Description	Pcs	Part No.
CNC Interface 14-pin Plug Kit	1	EX-0-803-001
CNC Interface connection lead 3 m	1	EX-0-803-003
CNC Interface connection lead 6 m	1	EX-0-803-004
CAN bus connection cable 10 m	1	EX-0-803-006
CAN bus connection cable 5 m	1	EX-0-803-007
RS422 bus connection cable 10 m	1	EX-0-803-008
RS422 bus connection cable 5 m	1	EX-0-803-009
Universal connection cable 10 m	1	EX-0-803-010
Universal connection cable 5 m	1	EX-0-803-011
Silicone Grease 25 ml	1	EX-0-805-001
Work lead with clamp 300 A/4 m/16 mm2/EU-plug 35-70 mm2	1	EX-5-543-037
Work lead with clamp 300 A/8 m/16 mm2/EU-plug 35-70 mm2 (ON REQUEST)	1	EX-5-543-001
Work lead with clamp 300 A/15 m/16 mm2/EU-plug 35-70 mm2 (ON REQUEST)	1	EX-5-543-002
Work lead with clamp 300 A/23 m/16 mm2/EU-plug 35-70 mm2 (ON REQUEST)	1	EX-5-543-003

Last update of this page: 07/11/2022. See Revision history for details.

EX-TRAFIRE® 65HD



FRONT VIEW



BACK VIEW



SIDE VIEW

Last update of this page: 07/11/2022. See Revision history for details.

EX-TRA-FIRE^{85HD}

INDUSTRIAL CUTTING. HEAVY-DUTY PERFORMANCE.

SOLUTIONS / INDUSTRIES



Automotive
and transportation



Education and
Training



General
Fabrication

Last update of this page: 07/11/2022. See Revision history for details.



EX-TRAFIRE[®]85HD

THERMACUT



EX-TRAFIRE® 85HD



CUTTING
85 A
CURRENT

MATERIAL
45+ mm
THICKNESS

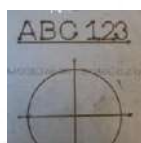
VARIOUS
OPERATION
MODES

IMPRESSIVE PERFORMANCE



- + Extremely high cutting speed
- + Maximum cutting quality, even with long cuts
- + Also ideal for automated processes

MARKING MODE



- + Automatic gas identification (air, nitrogen, argon)
- + Integrated gas saving function
- + Fine, deep or wide markings
- + Optional smooth marking for applications below 20A

READY FOR INDUSTRY 4.0



- + Industry leading connectivity
- + CAN / RS 485 / RS 422 Bus interface (optional)
- + Easy monitoring
- + Expandable and updatable

AUTOMATIC SETTINGS



- + Cutting gas media, electricity and pilot current
- + Compensation for pressure drops
- + Fewer operating errors, better cutting quality

HIGHEST FLEXIBILITY



- + Plate thicknesses up to 45 mm and more
- + For mechanized and manual applications
- + Gouging with high removal rate
- + Suitable for worldwide use

NEW CUTTING TORCH FHT® EX105TT



- + Torch design award winner
- + Optimized ergonomics
- + Relaxed PE and PA cutting
- + 100% duty cycle

Last update of this page: 07/11/2022. See Revision history for details.

EX-TRAFIRE® 85HD

SPECIFICATIONS

Output current [A]	20 - 85
Modes	cutting / grid cutting / gouging / marking
Duty cycle	100 % @ 85 A
Rated output voltage [VDC]	160
Severance cutting capacity [mm]	45 ⁽¹⁾
Piercing capacity [mm]	20 ⁽¹⁾
Recommended cutting capacity [mm]	25 ⁽¹⁾
Plasma gas	compr. air / nitrogen / argon
Max. Air flow [lpm/bar]	195/5
CNC interface / CAN BUS interface	optional / optional
Preadjusted voltage divider ratio	50:1
Input voltage [VAC]	3 × 400 ± 15 % ⁽²⁾
Frequency [Hz]	50/60
Dimensions (L×H×W) [mm]	613 × 515 × 302
Weight [kg]	24
Certification depending on region	CE, C-TICK, CCC, CSA
Maximum input pressure [bar/psi]	10/145
Protection level	IP23S
Insulation class	F
Type of hand torch	FHT-EX®105TTH
Type of machine torch	FHT-EX®105TTM

⁽¹⁾ related to low-alloy steel (mild steel)⁽²⁾ suitable for generator use

4 DIFFERENT OPERATION MODES

The plasma cutting systems in the EX-TRAFIRE®HD range are the absolute specialists in meeting tough demands in continuous operation. The mobile EX-TRAFIRE®85HD plasma cutting system with 100% duty cycle is the perfect solution for demanding heavy duty applications in industry.



Last update of this page: 22/03/2023. See Revision history for details.

EX-TRAFIRE® 85HD

ORDERING INFORMATION

Description	Length	Part No.
MANUAL PLASMA CUTTING SYSTEMS		
EX-TRAFIRE®85HD/CE/3x400 V Hand System/STD EQUIPPED/FHT-EX®105TTH Torch 5m/Starter Kit	5 m	EX-4-010-009
EX-TRAFIRE®85HD/CE/3x400 V Hand System/STD EQUIPPED/FHT-EX®105TTH Torch 8m/Starter Kit	8 m	EX-4-010-010
EX-TRAFIRE®85HD/CE/3x400 V Hand System/STD EQUIPPED/FHT-EX®105TTH Torch 15m/Starter Kit	15 m	EX-4-010-011
EX-TRAFIRE®85HD/CE/3x400 V Hand System/STD EQUIPPED/FHT-EX®105TTH Torch 23m/Starter Kit	23 m	EX-4-010-012
MECHANIZED PLASMA CUTTING SYSTEMS		
EX-TRAFIRE®85HD/CE/3x400 V Machine System/FULLY EQUIPPED/FHT-EX®105TTM STD-NR Torch 8m/Starter Kit	8 m	EX-4-011-019
EX-TRAFIRE®85HD/CE/3x400 V Machine System/FULLY EQUIPPED/FHT-EX®105TTM STD-NR Torch 15m/Starter Kit	15 m	EX-4-011-020
EX-TRAFIRE®85HD/CE 3x400 V Machine System/FULLY EQUIPPED/FHT-EX®105TTSM Torch 8m/Starter Kit	8 m	EX-4-012-006
EX-TRAFIRE®85HD/CE 3x400 V Machine System/FULLY EQUIPPED/FHT-EX®105TTSM Torch 15m/Starter Kit	15 m	EX-4-012-007
EX-TRAFIRE®85HD/CE/3x400 V Machine System/STD EQUIPPED/FHT-EX®105TTM STD-NR Torch 8m/Starter Kit	8 m	EX-4-013-002
EX-TRAFIRE®85HD/CE/3x400 V Machine System/STD EQUIPPED/FHT-EX®105TTM STD-NR Torch 15m/Starter Kit	15 m	EX-4-013-003
EX-TRAFIRE®85HD/CE 3x400 V Machine System/STD EQUIPPED/FHT-EX®105TTSM Torch 8m/Starter Kit	8 m	EX-4-014-002
EX-TRAFIRE®85HD/CE 3x400 V Machine System/STD EQUIPPED/FHT-EX®105TTSM Torch 15m/Starter Kit	15 m	EX-4-014-003
PLASMA CUTTING UNITS		
EX-TRAFIRE®85HD/CE/3x400 V power supply unit/FULLY EQUIPPED		EX-4-001-001
EX-TRAFIRE®85HD/CE/3x400 V power supply unit/STD EQUIPPED		EX-4-003-001

NOTE:

STD (standard) EQUIPPED - CNC-Port

FULLY EQUIPPED - CNC-Port & Serial Interface

AVAILABLE BULK PACKS

Description	Pcs	Part No.
Bulk Pack - Electrode 45-105 A - 25 pcs	1	EX-5-401-061
Bulk Pack - Nozzle 75 A - 25 pcs	1	EX-5-410-032
Bulk Pack - Nozzle Smoothline- 25 pcs	1	EX-5-410-060
Bulk Pack - Nozzle 45 A - 25 pcs	1	EX-5-410-061
Bulk Pack - Nozzle 55/65 A - 25 pcs	1	EX-5-410-063
Bulk Pack - Nozzle 85 A - 25 pcs	1	EX-5-410-065
Bulk Pack - Hand Shield 45-85 A - 18 pcs	1	EX-5-422-041
Bulk Pack - Machine Shield Smoothline - 18 pcs	1	EX-5-422-060
Bulk Pack - Machine Shield 45-85 A - 18 pcs	1	EX-5-422-061

ACCESSORIES

Description	Pcs	Part No.
CNC Interface 14-pin Plug Kit	1	EX-0-803-001
CNC Interface connection lead 3 m	1	EX-0-803-003
CNC Interface connection lead 6 m	1	EX-0-803-004
CAN bus connection cable 10 m	1	EX-0-803-006
CAN bus connection cable 5 m	1	EX-0-803-007
RS422 bus connection cable 10 m	1	EX-0-803-008
RS422 bus connection cable 5 m	1	EX-0-803-009
Universal connection cable 10 m	1	EX-0-803-010
Universal connection cable 5 m	1	EX-0-803-011
Silicone Grease 25 ml	1	EX-0-805-001
Work lead with clamp 300 A/4 m/16 mm2/EU-plug 35-70 mm2	1	EX-5-543-037
Work lead with clamp 300 A/8 m/16 mm2/EU-plug 35-70 mm2 (ON REQUEST)	1	EX-5-543-001
Work lead with clamp 300 A/15 m/16 mm2/EU-plug 35-70 mm2 (ON REQUEST)	1	EX-5-543-002
Work lead with clamp 300 A/23 m/16 mm2/EU-plug 35-70 mm2 (ON REQUEST)	1	EX-5-543-003

Last update of this page: 07/11/2022. See Revision history for details.

EX-TRAFIRE® 85HD



FRONT VIEW



BACK VIEW



SIDE VIEW

Last update of this page: 07/11/2022. See Revision history for details.

EX-TRAFIRE[®] IO5HD

INDUSTRIAL CUTTING. HEAVY-DUTY PERFORMANCE.

SOLUTIONS / INDUSTRIES



Automotive
and transportation



Steel mills and
steel service
centers



Structural



Shipyards
and Offshore



Heavy
fabrication

Last update of this page: 01/07/2022. See Revision history for details.



EX-TRAFIRE® 105HD

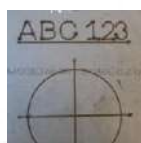


IMPRESSIVE PERFORMANCE



- + Extremely high cutting speed
- + Maximum cutting quality, even with long cuts
- + Also ideal for automated processes

MARKING MODE



- + Automatic gas identification (air, nitrogen, argon)
- + Integrated gas saving function
- + Fine, deep or wide markings
- + Optional smooth marking for applications below 20A

READY FOR INDUSTRY 4.0



- + Industry leading connectivity
- + CAN / RS 485 / RS 422 Bus interface (optional)
- + Easy monitoring
- + Expandable and updatable

AUTOMATIC SETTINGS



- + Cutting gas media, electricity and pilot current
- + Compensation for pressure drops
- + Fewer operating errors, better cutting quality

HIGHEST FLEXIBILITY



- + Plate thicknesses up to 55 mm and more
- + For mechanized and manual applications
- + Gouging with high removal rate
- + Suitable for worldwide use

NEW CUTTING TORCH FHT® EX105TT



- + Torch design award winner
- + Optimized ergonomics
- + Relaxed PE and PA cutting
- + 100% duty cycle

Last update of this page: 01/07/2022. See Revision history for details.

EX-TRAFIRE® 105HD

SPECIFICATIONS

Output current [A]	20-105
Modes	cutting / grid cutting / gouging / marking
Duty cycle	100 % @ 105 A
Rated output voltage [VDC]	200
Severance cutting capacity [mm]	50+ ⁽¹⁾
Piercing capacity [mm]	20 ⁽¹⁾
Recommended cutting capacity [mm]	35 ⁽¹⁾
Plasma gas	compr. air / nitrogen / argon
Max. Air flow [lpm/bar]	205/5
CNC interface / CAN BUS interface	optional / optional
Preadjusted voltage divider ratio	50:1
Input voltage [VAC]	3 × 400 ± 15 % ⁽²⁾
Frequency [Hz]	50/60
Dimensions (L×H×W) [mm]	613 × 515 × 302
Weight [kg]	35.4
Certification depending on region	CE, C-TICK, CCC, CSA
Maximum input pressure [bar/psi]	10/145
Protection level	IP23S
Insulation class	F
Type of hand torch	FHT-EX®105TTH
Type of machine torch	FHT-EX®105TTM

⁽¹⁾ related to low-alloy steel (mild steel)

⁽²⁾ suitable for generator use

4 DIFFERENT OPERATION MODES

The plasma cutting systems in the EX-TRAFIRE®HD range are the absolute specialists in meeting tough demands in continuous operation. The mobile EX-TRAFIRE®105HD plasma cutting system with 100% duty cycle is the perfect solution for demanding heavy duty applications in industry.



Last update of this page: 22/03/2023. See Revision history for details.

EX-TRAFIRE® 105HD

ORDERING INFORMATION

Description	Length	Part No.
MANUAL PLASMA CUTTING SYSTEMS		
EX-TRAFIRE®105HD/CE/3x400 V Hand System/CNC Port/FHT-EX®105TTH/Starter Kit	5 m	EX-5-010-009
EX-TRAFIRE®105HD/CE/3x400 V Hand System/CNC Port/FHT-EX®105TTH/Starter Kit	8 m	EX-5-010-010
EX-TRAFIRE®105HD/CE/3x400 V Hand System/CNC Port/FHT-EX®105TTH/Starter Kit	15 m	EX-5-010-011
EX-TRAFIRE®105HD/CE/3x400 V Hand System/CNC Port/FHT-EX®105TTH/Starter Kit	23 m	EX-5-010-012
MECHANIZED PLASMA CUTTING SYSTEMS		
EX-TRAFIRE®105HD/CE/3x400 V Machine System/CNC Port/Serial Interface/FHT-EX®105TTM STD-NR/Starter Kit	8 m	EX-5-011-019
EX-TRAFIRE®105HD/CE/3x400 V Machine System/CNC Port/Serial Interface/FHT-EX®105TTM STD-NR/Starter Kit	15 m	EX-5-011-020
EX-TRAFIRE®105HD CE 3x400 V Machine System/CNC Port/Serial Interface/FHT-EX®105TTSM/Starter Kit	8 m	EX-5-012-006
EX-TRAFIRE®105HD CE 3x400 V Machine System/CNC Port/Serial Interface/FHT-EX®105TTSM/Starter Kit	15 m	EX-5-012-007
EX-TRAFIRE®105HD/CE/3x400 V Machine System/CNC Port/FHT-EX®105TTM STD-NR/Starter Kit	8 m	EX-5-013-002
EX-TRAFIRE®105HD/CE/3x400 V Machine System/CNC Port/FHT-EX®105TTM STD-NR/Starter Kit	15 m	EX-5-013-003
EX-TRAFIRE®105HD CE 3x400 V Machine System/CNC Port/FHT-EX®105TTSM/Starter Kit	8 m	EX-5-014-002
EX-TRAFIRE®105HD CE 3x400 V Machine System/CNC Port/FHT-EX®105TTSM/Starter Kit	15 m	EX-5-014-003
PLASMA CUTTING UNITS		
EX-TRAFIRE®105HD/CE/3x400 V power supply unit/CNC Port/Serial Interface		EX-5-001-002
EX-TRAFIRE®105HD/CE/3x400 V power supply unit/CNC Port		EX-5-003-001

AVAILABLE BULK PACKS

Description	Pcs	Part No.
Bulk Pack - Electrode 45-105 A - 25 pcs	1	EX-5-401-061
Bulk Pack - Nozzle 75 A - 25 pcs	1	EX-5-410-032
Bulk Pack - Nozzle Smoothline- 25 pcs	1	EX-5-410-060
Bulk Pack - Nozzle 45 A - 25 pcs	1	EX-5-410-061
Bulk Pack - Nozzle 55/65 A - 25 pcs	1	EX-5-410-063
Bulk Pack - Nozzle 85 A - 25 pcs	1	EX-5-410-065
Bulk Pack - Nozzle 100/105 A - 25 pcs	1	EX-5-410-066
Bulk Pack - Hand Shield 45-85 A - 18 pcs	1	EX-5-422-041
Bulk Pack - Hand Shield 100/105 A - 18 pcs	1	EX-5-422-042
Bulk Pack - Machine Shield Smoothline - 18 pcs	1	EX-5-422-060
Bulk Pack - Machine Shield 45-85 A - 18 pcs	1	EX-5-422-061
Bulk Pack - Machine Shield 100/105 A - 18 pcs	1	EX-5-422-062

ACCESSORIES

Description	Pcs	Part No.
CNC Interface 14-pin Plug Kit	1	EX-0-803-001
CNC Interface connection lead 3 m	1	EX-0-803-003
CNC Interface connection lead 6 m	1	EX-0-803-004
CAN bus connection cable 10 m	1	EX-0-803-006
CAN bus connection cable 5 m	1	EX-0-803-007
RS422 bus connection cable 10 m	1	EX-0-803-008
RS422 bus connection cable 5 m	1	EX-0-803-009
Universal connection cable 10 m	1	EX-0-803-010
Universal connection cable 5 m	1	EX-0-803-011
Silicone Grease 25 ml	1	EX-0-805-001
Work lead with clamp 300 A/4 m/16 mm2/EU-plug 35-70 mm2	1	EX-5-543-037
Work lead with clamp 300 A/8 m/16 mm2/EU-plug 35-70 mm2 (ON REQUEST)	1	EX-5-543-001
Work lead with clamp 300 A/15 m/16 mm2/EU-plug 35-70 mm2 (ON REQUEST)	1	EX-5-543-002
Work lead with clamp 300 A/23 m/16 mm2/EU-plug 35-70 mm2 (ON REQUEST)	1	EX-5-543-003

Last update of this page: 01/07/2022. See Revision history for details.

EX-TRAFIRE® 105HD



FRONT VIEW



BACK VIEW



SIDE VIEW

Last update of this page: 01/07/2022. See Revision history for details.

FHT-EX® 105TT

HAND / MACHINE TORCHES AND CONSUMABLES

SUITABLE FOR EX-TRAFIRE® 65HD/85HD/105HD



Last update of this page: 09/06/2021. See Revision history for details.



FHT-EX® 105TT



THE ALL-NEW CUTTING TORCH

+ HANDHELD
+ MECHANIZED



The high-performant FHT-EX®105TT H/M hand and machine torches are ideal for meeting tough demands in continuous operation. These torches are optimally designed for use with EX-TRAFIRE®105HD power supplies and are suitable for cutting, gouging, grid-cutting and marking. They can cut plate thickness of up to 55+ mm and more precisely and quickly.

Thanks to the THERMACUT® Torch Connection System (TCS), changing the torch is a quick and easy process. The powerful torches are the result of decades of experience in the field of plasma cutting. They feature an extremely robust and durable design in which all consumables can be replaced quickly and easily.

BENEFITS

- High-performant torches for mechanised applications and handheld use
- Ergonomic handheld torches for safe and reliable holding and guiding in all positions
- Compact and flexible for handheld applications, even in the case of tight radii or gouging of fillet welds
- 100 % duty cycle at 105 A, ideal for continuous use
- Ideal for plate thicknesses of up to 50+ mm and more with high power reserves
- Consumables with an extended lifetime
- Quick and tool-free replacement of consumables
- Piercing 25+ mm
- Perfectly designed for use with EX-TRAFIRE®105HD power supplies

Last update of this page: 01/07/2022. See Revision history for details.

FHT-EX® 105TTH

HAND TORCH ASSEMBLY



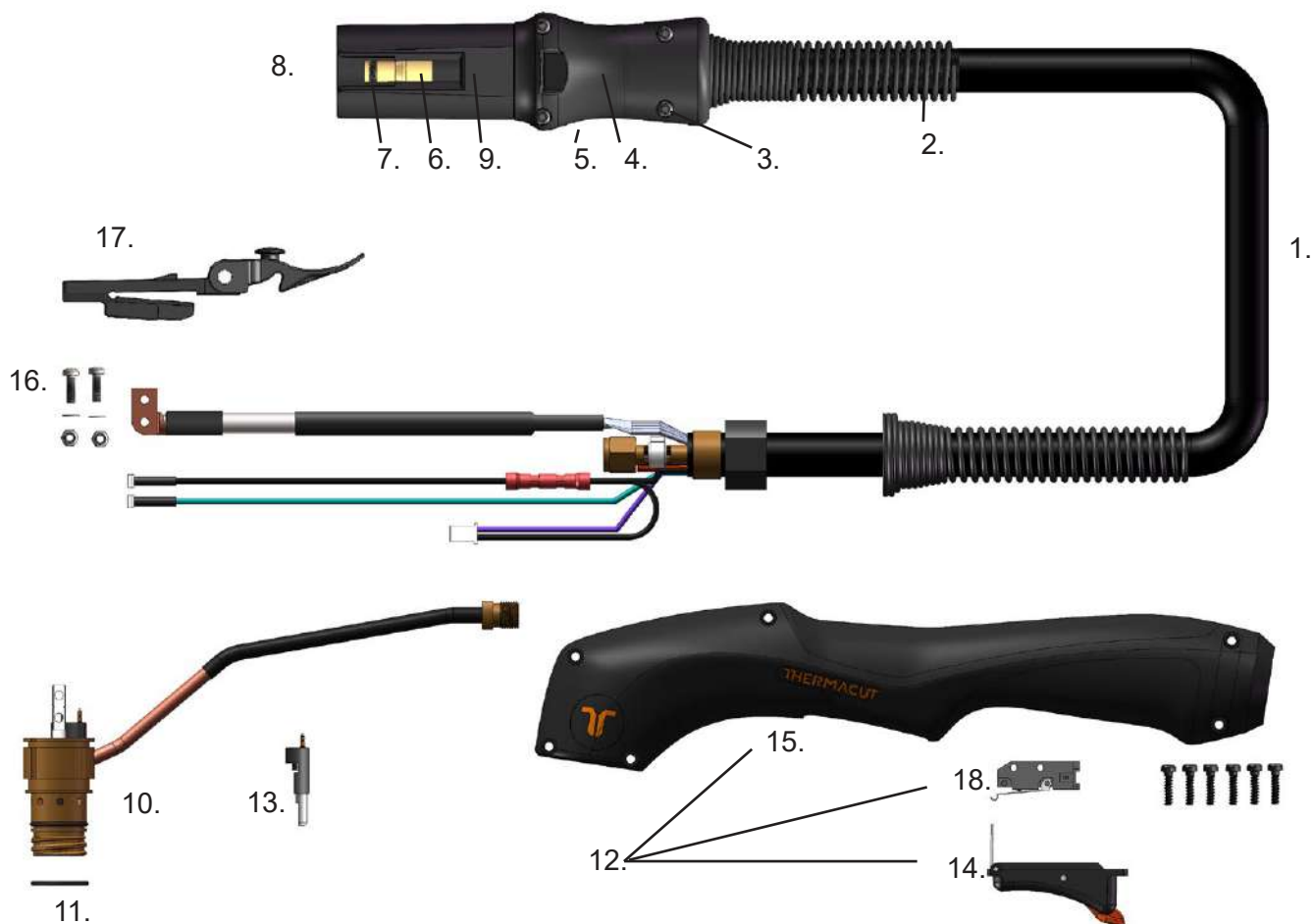
Item	Part No.	Description	Pcs
1.	EX-5-133-002	DEMO FHT-EX®105TTH Hand Torch Assembly/TCS13	1
	EX-5-139-001	FHT-EX®105TTH Hand Torch Assembly-w/o consumables w/5m (16.5') Lead/TCS13	1
	EX-5-139-002	FHT-EX®105TTH Hand Torch Assembly w/o consumables w/8m (26') Lead/TCS13	1
	EX-5-139-003	FHT-EX®105TTH Hand Torch Assembly w/o consumables w/15m (50') Lead/TCS13	1
	EX-5-139-004	FHT-EX®105TTH Hand Torch Assembly w/o consumables w/23m (75') Lead/TCS13	1
2.	EX-0-321-003	Latch with Key Assembly	1

⊕ LATCH WITH KEY IS NOT CONTENT OF TORCHES ABOVE. IF YOU NEED IT, YOU HAVE TO ORDER SEPARATELY.

Last update of this page: 01/07/2022. See Revision history for details.

FHT-EX® 105TTH

HAND TORCH COMPONENTS

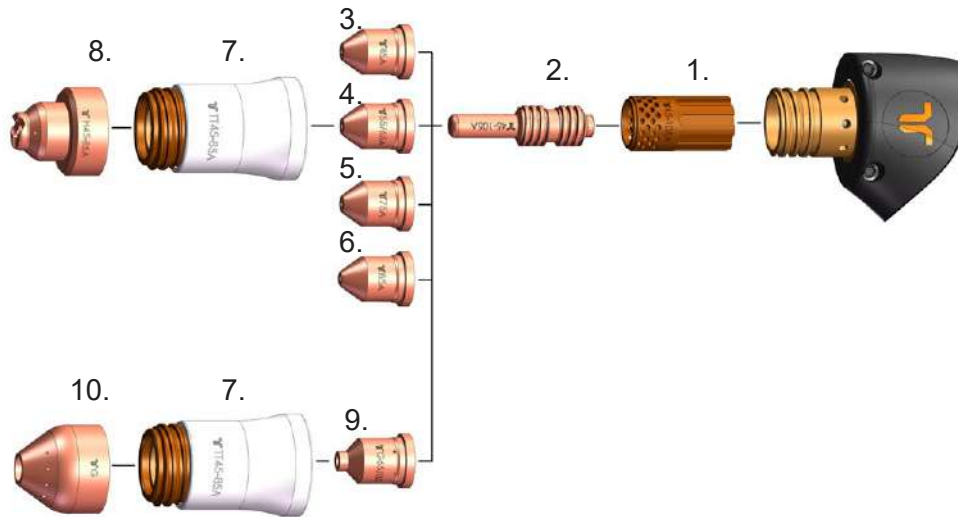


Item	Part No.	Description	Pcs	Item	Part No.	Description	Pcs
1.	EX-5-374-010	FHT-EX®105TTH Hand Torch Lead Replacement 5m (16.5')/TCS13	1	9.	EX-0-323-001	TCS13 Plug Body	1
1.	EX-5-374-011	FHT-EX®105TTH Hand Torch Lead Replacement 8m (26')/TCS13	1	10.	EX-5-302-001	Hand Torch Body Repl. Kit (incl. Torch body & Cap sensor)	2
1.	EX-5-374-012	FHT-EX®105TTH Hand Torch Lead Replacement 15m (50')/TCS13	1	11.	EX-5-431-050	O-Ring (fitted on the torch body) - 2 pcs	1
1.	EX-5-374-013	FHT-EX®105TTH Hand Torch Lead Replacement 23m (75')/TCS13	1	12.	EX-5-314-001	Hand Torch Handle Replacement Kit	1
2.	EX-5-318-001	TCS Plug Spring Strain Relief	1	13.	EX-5-305-002	Cap-sensor Replacement Kit with Screws/ Hand Torch	1
3.	EX-0-325-015	TCS Clam Shell Screw Kit (incl. 4 screws)	1	14.	EX-5-313-031	Safety Trigger	1
4.	EX-0-325-002	TCS Clam Shell Upper	1	15.	EX-5-308-001	Hand Torch Handle with Screws	1
5.	EX-0-325-001	TCS Clam Shell Lower	1	16.	EX-5-372-010	Cathode mounting kit	1
6.	EX-0-325-010	Retaining Ring (Outer circlip ring)	1	17.	EX-0-321-003	Latch w/Key Assembly	1
7.	EX-0-325-009	O-Ring (fitted in the TCS plug)	1	18.	EX-5-313-030	Safety Trigger Micro-Switch	1
8.	EX-0-325-005	Male Crimp Pin for TCS Plug	1				

Last update of this page: 01/07/2022. See Revision history for details.

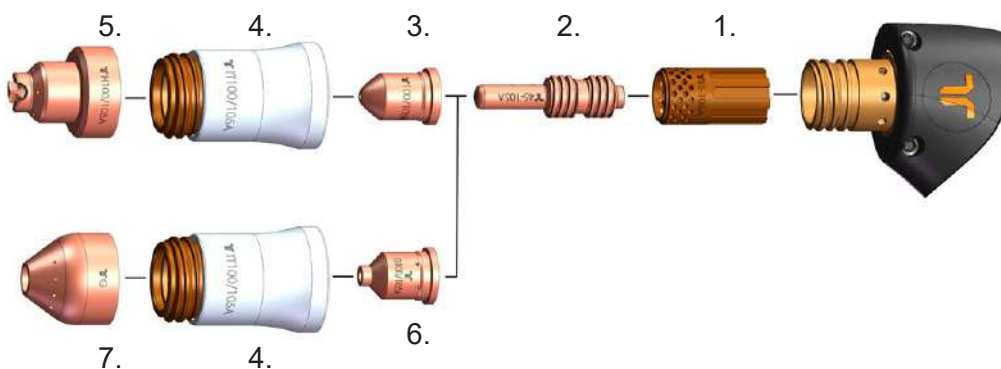
CONSUMABLES

HAND TORCH CONSUMABLES - 45-85 A



Item	Part No.	Description	Pcs	Item	Part No.	Description	Pcs
1.	EX-5-404-051	Swirl Ring 45-105 A	1	6.	EX-5-410-055	Nozzle 85 A	5
2.	EX-5-401-051	Electrode 45-105 A	5	7.	EX-5-415-050	Nozzle Retaining Cap 45-85 A	1
3.	EX-5-410-051	Nozzle 45 A	5	8.	EX-5-422-031	Hand Shield 45-85 A	1
4.	EX-5-410-053	Nozzle 55/65 A	5	9.	EX-5-440-051	Gouging Nozzle 65-85 A	5
5.	EX-5-410-030	Nozzle 75 A	5	10.	EX-5-440-050	Gouging Shield	1

HAND TORCH CONSUMABLES - 100-105 A

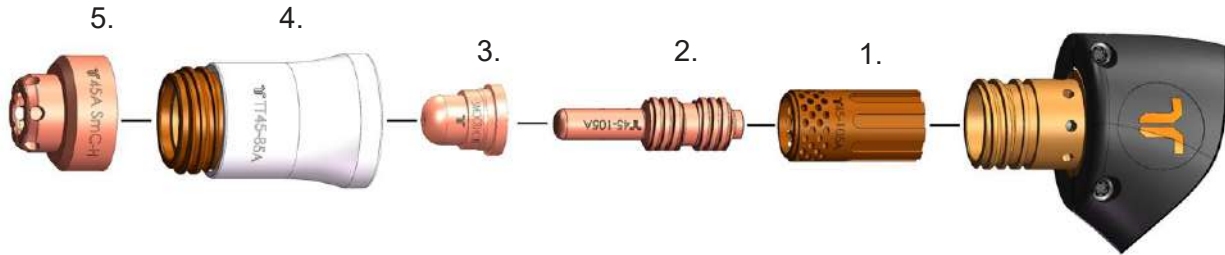


Item	Part No.	Description	Pcs	Item	Part No.	Description	Pcs
1.	EX-5-404-051	Swirl Ring 45-105 A	1	5.	EX-5-422-032	Hand Shield 100/105 A	1
2.	EX-5-401-051	Electrode 45-105 A	5	6.	EX-5-440-052	Gouging Nozzle 100/105 A	5
3.	EX-5-410-056	Nozzle 100/105 A	5	7.	EX-5-440-050	Gouging Shield	1
4.	EX-5-415-051	Nozzle Retaining Cap 100/105 A	1				

Last update of this page: 01/07/2022. See Revision history for details.

CONSUMABLES

HAND TORCH CONSUMABLES - SMOOTHLINE

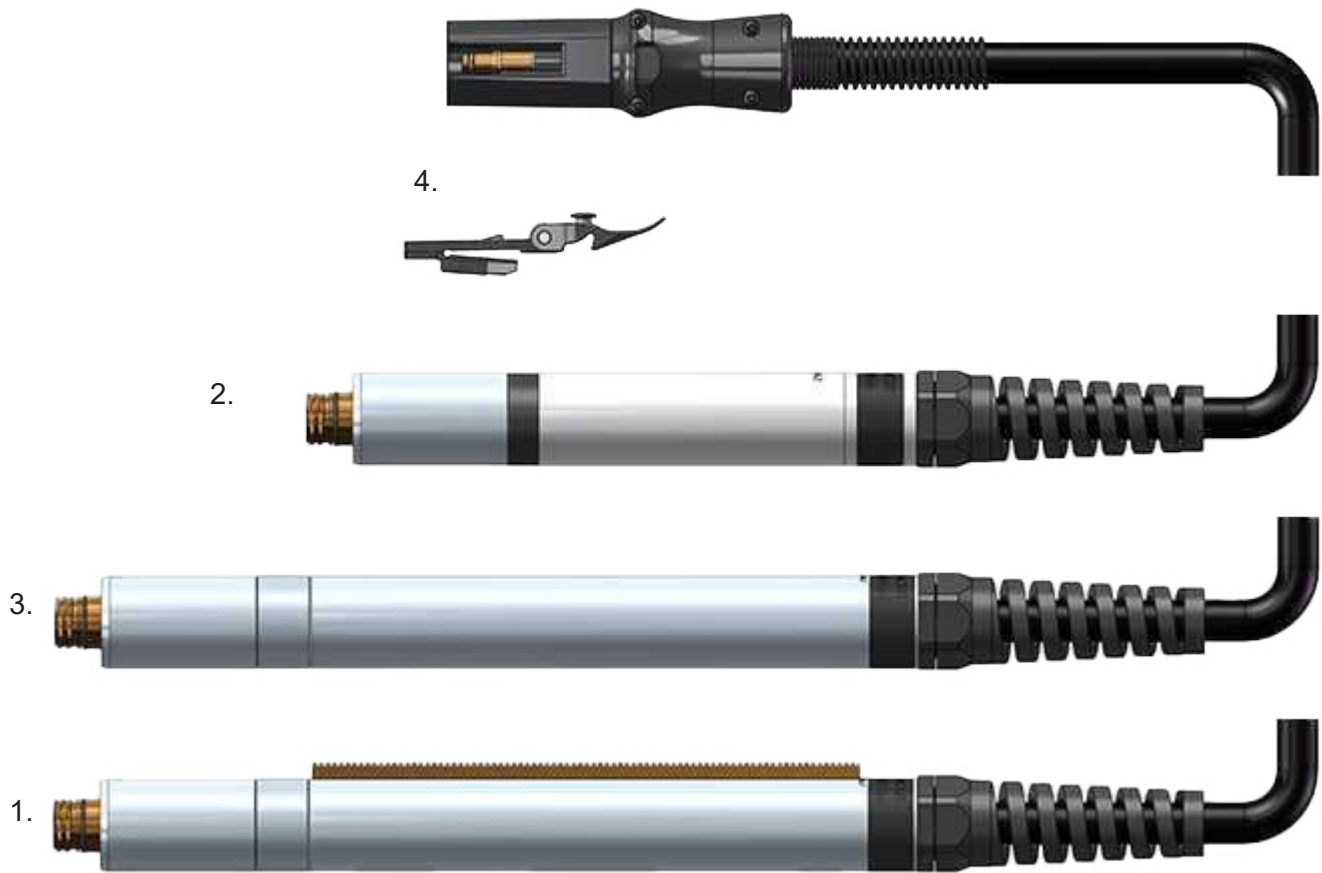


Item	Part No.	Description	Pcs
1.	EX-5-404-051	Swirl Ring 45-105 A	1
2.	EX-5-401-051	Electrode 45-105 A	5
3.	EX-5-410-050	Nozzle Smoothline	5
4.	EX-5-415-050	Nozzle Retaining Cap 45-85 A	1
5.	EX-5-420-050	Hand Shield 40/45 A Smoothline	1

Last update of this page: 01/07/2022. See Revision history for details.

FHT-EX® 105TTM

MACHINE TORCH ASSEMBLY



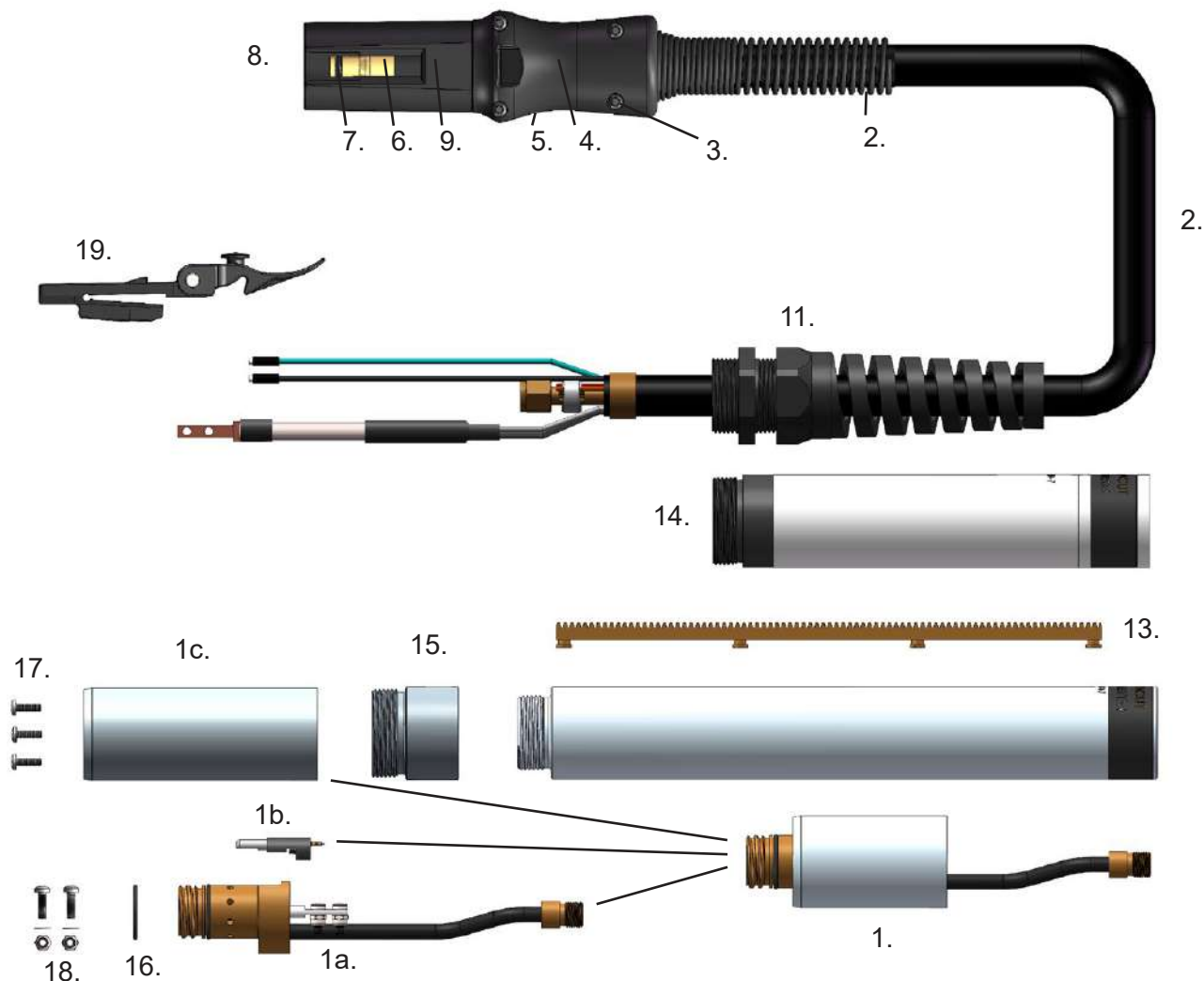
Item	Part No.	Description	Pcs
1.	EX-5-233-020	DEMO FHT-EX®105TTM (STD) Machine Torch w/Rack Assembly/TCS13	1
NS	EX-5-234-021	DEMO FHT-EX®105TTSM Short Machine Torch Assembly/ TCS13	1
2.	EX-5-242-021	FHT-EX®105TTSM Short Machine Torch Assembly-w/o consumables w/5m (16.5') Lead/ TCS13	1
2.	EX-5-244-021	FHT-EX®105TTSM Short Machine Torch Assembly-w/o consumables w/8m (26') Lead/ TCS13	1
2.	EX-5-247-021	FHT-EX®105TTSM Short Machine Torch Assembly-w/o consumables w/15m (50') Lead/ TCS13	1
2.	EX-5-250-021	FHT-EX®105TTSM Short Machine Torch Assembly-w/o consumables w/23m (75') Lead/ TCS13	1
3.	EX-5-202-031	FHT-EX®105TTM M Torch w/o Rack Assy w/o consumables w/5m (16.5')Lead/ TCS13	1
3.	EX-5-204-031	FHT-EX®105TTM M Torch w/o Rack Assy w/o consumables w/8m (26') Lead/ TCS13	1
3.	EX-5-207-032	FHT-EX®105TTM M Torch w/o Rack Assy w/o consumables w/15m (50') Lead/ TCS13	1
3	EX-5-210-034	FHT-EX®105TTM M Torch w/o Rack Assy w/o consumables w/23m (75') Lead/ TCS13	1
ⓐ	EX-0-321-003	Latch with Key Assembly	1

ⓐ LATCH WITH KEY IS NOT CONTENT OF TORCHES ABOVE. IF YOU NEED IT, YOU HAVE TO ORDER SEPARATELY.

Last update of this page: 01/07/2022. See Revision history for details.

FHT-EX® 105TTM

MACHINE TORCH COMPONENTS

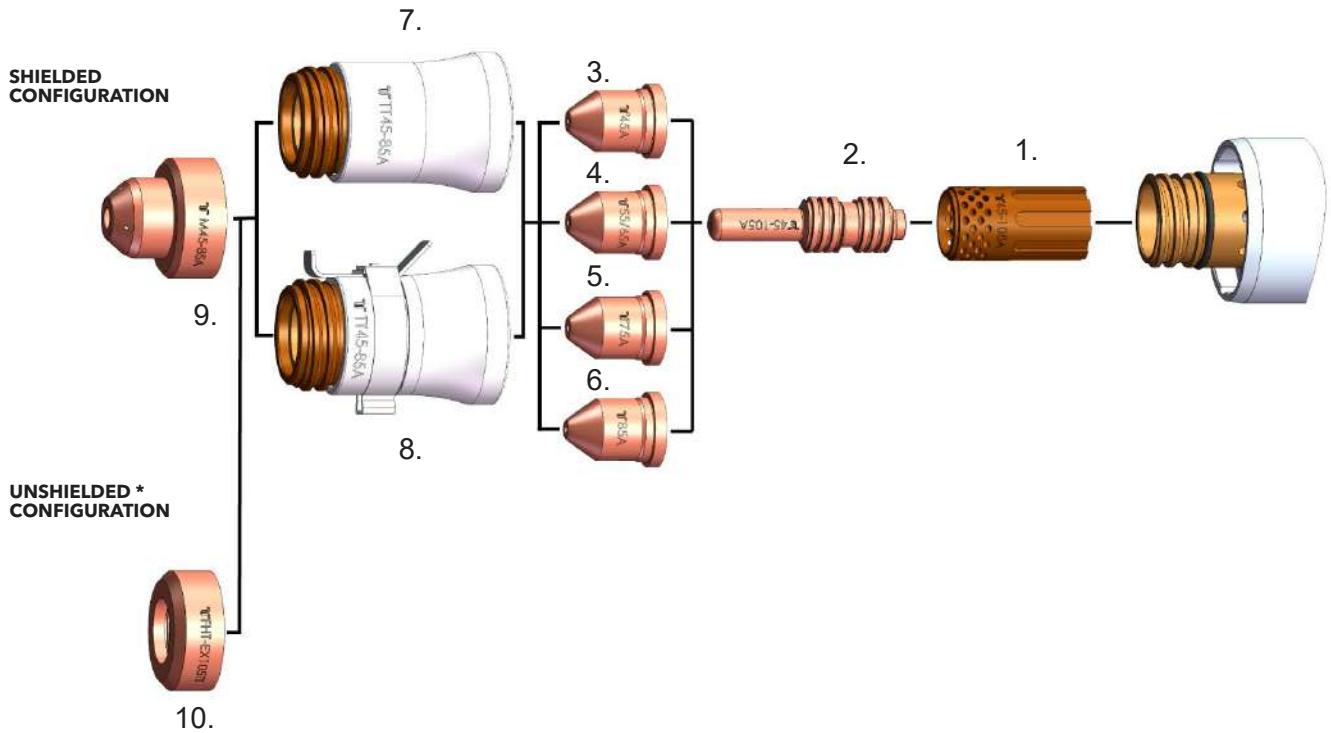


Item	Part No.	Description	Pcs	Item	Part No.	Description	Pcs
1.	EX-5-303-011	Machine Torch Body Assembly FHT-EX®105TTM	1	8.	EX-0-325-009	O-Ring (fitted in the TCS plug)	1
1a.	EX-5-303-010	Machine Torch Body FHT-EX®105TTM	1	9.	EX-0-325-005	Male Crimp Pin for TCS Plug	1
1b.	EX-5-304-001	Cap Sensor Replacement Kit with Screws/Machine Torch	1	10.	EX-0-323-001	TCS13 Plug Body	1
1c.	EX-5-306-002	Torch Mounting Sleeve (incl. 3 screws)	1	11.	EX-5-317-021	Machine Torch Strain Relief	1
2.	EX-5-375-010	FHT-EX®105TTM Machine Torch Lead Replacement 5m (16.5')/TCS13	1	12.	EX-5-306-003	Standard Mounting Tube w/o Rack	1
2.	EX-5-375-011	FHT-EX®105TTM Machine Torch Lead Replacement 8m (26')/TCS13	1	13.	EX-5-306-004	Gear Rack	1
2.	EX-5-375-012	FHT-EX®105TTM Machine Torch Lead Replacement 15m (50')/TCS13	1	14.	EX-5-306-009	Short Mounting Tube	1
2.	EX-5-375-013	FHT-EX®105TTM Machine Torch Lead Replacement 23m (75')/TCS13	1	15.	EX-5-306-005	Standard Mounting Tube Reduction Nut	1
3.	EX-5-318-001	TCS Plug Spring Strain Relief	1	16.	EX-5-431-050	O-Ring (fitted on the torch body)	1
4.	EX-0-325-015	TCS Clam Shell Screw Kit (incl. 4 screws)	1	17.	EX-5-372-005	Torch Mounting Screws Kit (incl. 3 screws)	1
5.	EX-0-325-002	TCS Clam Shell Upper	1	18.	EX-5-372-010	Cathode Mounting Kit	1
6.	EX-0-325-001	TCS Clam Shell Lower	1	19.	EX-0-321-003	Latch w/Key Assembly	1
7.	EX-0-325-010	Retaining Ring (Outer circlip ring)	1				

Last update of this page: 01/07/2022. See Revision history for details.

CONSUMABLES

STANDARD MACHINE TORCH CONSUMABLES - 45-85 A



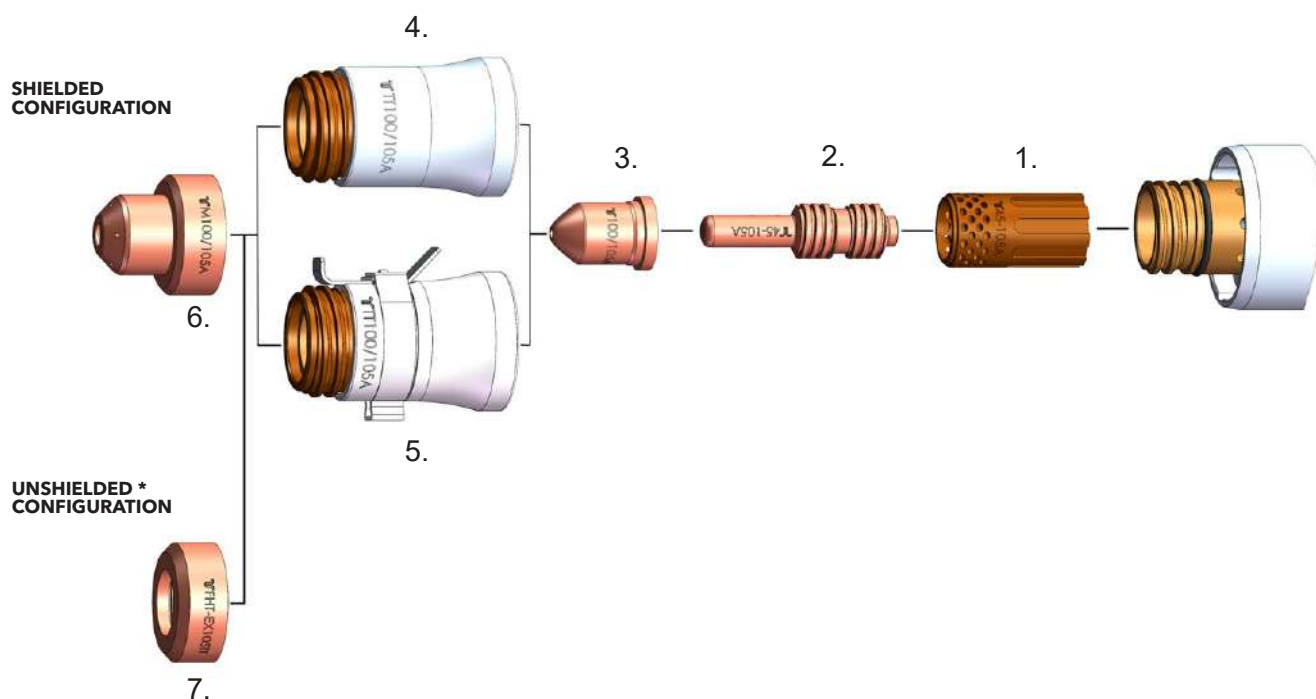
Item	Part No.	Description	Pcs	Item	Part No.	Description	Pcs
1.	EX-5-404-051	Swirl Ring 45-105 A	1	6.	EX-5-410-055	Nozzle 85 A	5
2.	EX-5-401-051	Electrode 45-105 A	5	7.	EX-5-415-050	Nozzle Retaining Cap 45-85 A	1
3.	EX-5-410-051	Nozzle 45 A	5	8.	EX-5-415-052	Nozzle Retaining Cap 45-85 A w/IHS Tab	1
4.	EX-5-410-053	Nozzle 55/65 A	5	9.	EX-5-422-051	Machine Shield 45-85 A	1
5.	EX-5-410-030	Nozzle 75 A	5	10.	EX-5-423-001	Deflector	1

* IN COUNTRIES FOLLOWING CE STANDARDS, UNSHIELDED CONSUMABLE CONFIGURATION MAY ONLY BE USED IN MECHANIZED TORCH APPLICATIONS.

Last update of this page: 01/07/2022. See Revision history for details.

CONSUMABLES

MACHINE TORCH CONSUMABLES - 100-105 A



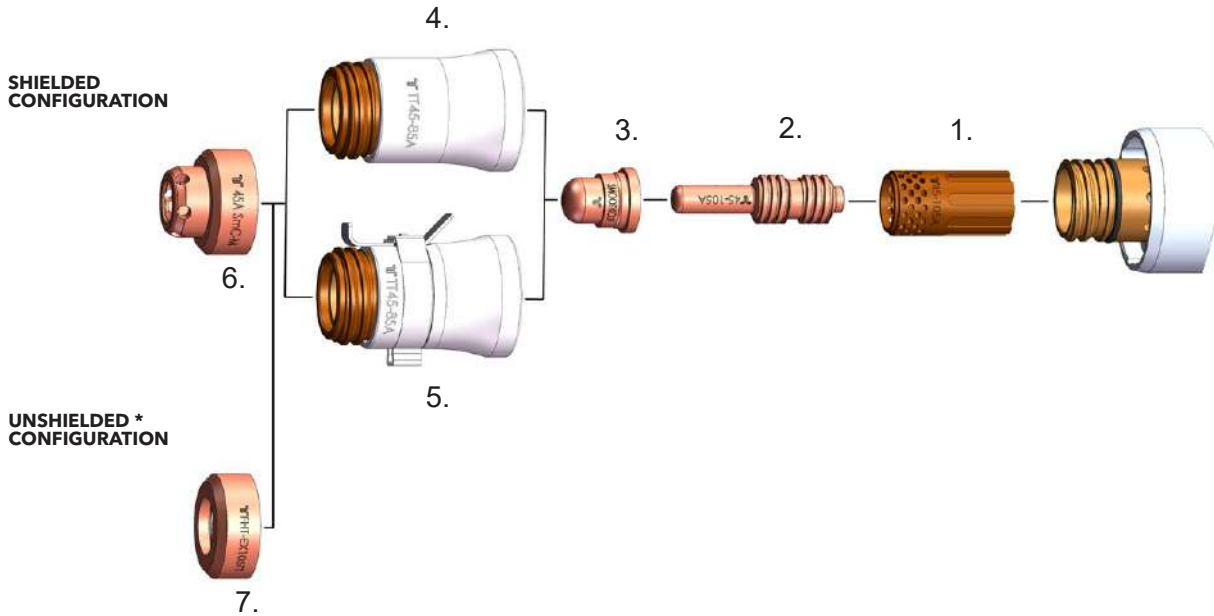
Item	Part No.	Description	Pcs
1.	EX-5-404-051	Swirl Ring 45-105 A	1
2.	EX-5-401-051	Electrode 45-105 A	5
3.	EX-5-410-056	Nozzle 100/105 A	5
4.	EX-5-415-051	Nozzle Retaining Cap 100/105 A	1
5.	EX-5-415-053	Nozzle Retaining Cap 100/105 A w/IHS Tab	1
6.	EX-5-422-052	Machine Shield 100/105 A	1
7.	EX-5-423-001	Deflector	1

* IN COUNTRIES FOLLOWING CE STANDARDS, UNSHIELDED CONSUMABLE CONFIGURATION MAY ONLY BE USED IN MECHANIZED TORCH APPLICATIONS.

Last update of this page: 01/07/2022. See Revision history for details.

CONSUMABLES

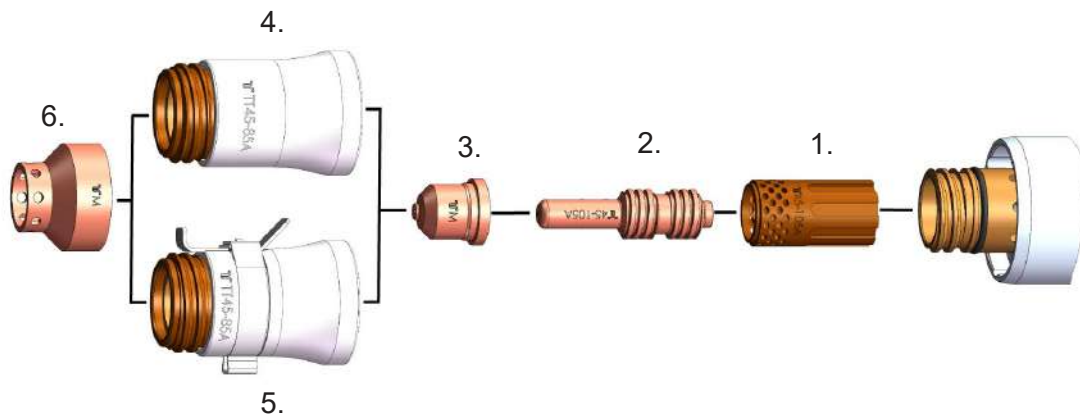
MACHINE TORCH CONSUMABLES - SMOOTHLINE



Item	Part No.	Description	Pcs	Item	Part No.	Description	Pcs
1.	EX-5-404-051	Swirl Ring 45-105 A	1	5.	EX-5-415-052	Nozzle Retaining Cap 45-85 A w/IHS Tab	1
2.	EX-5-401-051	Electrode 45-105 A	5	6.	EX-5-422-050	Machine Shield 40/45 A Smoothline	1
3.	EX-5-410-050	Nozzle Smoothline	5	7.	EX-5-423-001	Deflector	1
4.	EX-5-415-050	Nozzle Retaining Cap 45-85 A	1				

* IN COUNTRIES FOLLOWING CE STANDARDS, UNSHIELDED CONSUMABLE CONFIGURATION MAY ONLY BE USED IN MECHANIZED TORCH APPLICATIONS.

MACHINE TORCH CONSUMABLES - MARKING



Item	Part No.	Description	Pcs	Item	Part No.	Description	Pcs
1.	EX-5-404-051	Swirl Ring 45-105A	1	4.	EX-5-415-050	Nozzle Retaining Cap 45-85A	1
2.	EX-5-401-051	Electrode 45-105 A	5	5.	EX-5-415-052	Nozzle Retaining Cap 45-85A w/IHS Tab	1
3.	EX-5-445-001	Marking Nozzle	5	6.	EX-5-445-002	Marking Shield	1

Last update of this page: 01/07/2022. See Revision history for details.

EX-TRAFIRE® I25HD

INDUSTRIAL CUTTING. HEAVY-DUTY PERFORMANCE.

SOLUTIONS / INDUSTRIES



Heavy
Fabrication



Steel mills and
steel service
centers



Structural



Shipyards
and Offshore



Heavy fabrication

Last update of this page: 18/07/2023. See Revision history for details.



EX-TRAFIRE® 125HD



IMPRESSIVE PERFORMANCE



- + Extremely high cutting speed
- + Maximum cutting quality, even with long cuts
- + Also ideal for automated processes

READY FOR INDUSTRY 4.0



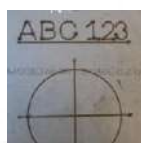
- + Industry leading connectivity
- + CAN / RS 485 / RS 422 Bus interface (optional)
- + Easy monitoring
- + Expandable and updatable

HIGHEST FLEXIBILITY



- + Plate thicknesses up to 55 mm
- + For mechanized and manual applications
- + Gouging with high removal rate
- + Suitable for worldwide use

MARKING MODE



- + Automatic gas identification (air, nitrogen, argon)
- + Integrated gas saving function
- + Fine, deep or wide markings
- + Optional smooth marking for applications below 30A

AUTOMATIC SETTINGS



- + Cutting gas media, electricity and pilot current
- + Compensation for pressure drops
- + Fewer operating errors, better cutting quality

NEW CUTTING TORCH FHT® EX125TT



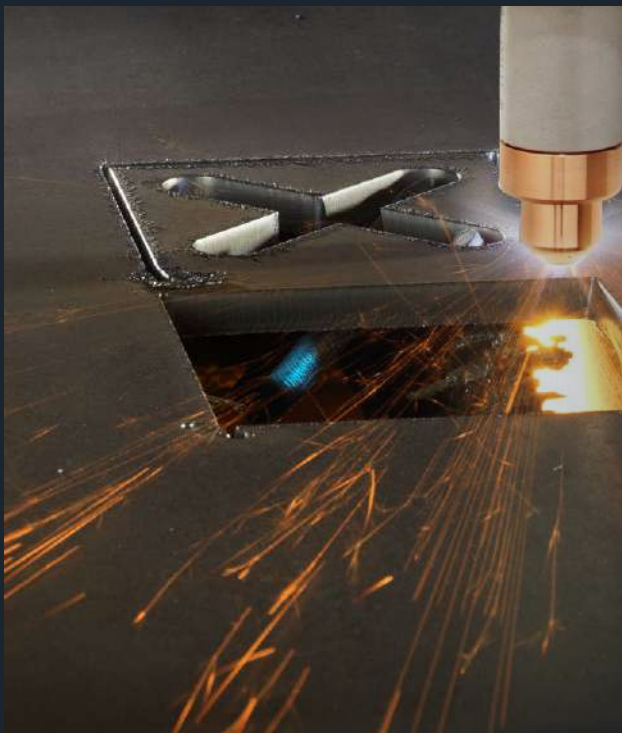
- + Torch design award winner
- + Optimized ergonomics
- + Relaxed PE and PA cutting
- + 100% duty cycle

Last update of this page: 18/07/2023. See Revision history for details.

EX-TRAFIRE® 125HD

SPECIFICATIONS

Output current [A]	30-125
Modes	cutting / grid cutting / gouging / marking
Duty cycle	100 % @ 125 A
Rated output voltage [VDC]	382,5
Severance cutting capacity [mm]	60 ⁽¹⁾
Piercing capacity [mm]	25 ⁽¹⁾
Recommended cutting capacity [mm]	40 ⁽¹⁾
Plasma gas	compressed air/nitrogen
Max. Air flow [lpm/bar]	175/5.2
CNC interface / CAN BUS interface	optional / optional
Preadjusted voltage divider ratio	50:1
Input voltage [VAC]	3 x 400 ± 15 % ⁽²⁾
Frequency [Hz]	50/60
Dimensions (L×H×W) [mm]	615 x 295 x 505
Weight [kg]	37.7
Certification depending on region	CE, RCM, CSA
Maximum input pressure [bar/psi]	10/145
Protection level	IP23S
Insulation class	F
Type of hand torch	FHT-EX®125TTH
Type of machine torch	FHT-EX®125TTM

⁽¹⁾ related to low-alloy steel (mild steel)⁽²⁾ suitable for generator use

4 DIFFERENT OPERATION MODES

The plasma cutting systems in the EX-TRAFIRE®HD range are the absolute specialists in meeting tough demands in continuous operation. The mobile EX-TRAFIRE®125HD plasma cutting system with 100% duty cycle is the perfect solution for demanding heavy duty applications in industry.



Last update of this page: 18/07/2023. See Revision history for details.

EX-TRAFIRE® 125HD

ORDERING INFORMATION

Description	Length	Part No.
MANUAL PLASMA CUTTING SYSTEMS		
EX-TRAFIRE®125HD/CE/3x400 V Hand System/FHT-EX®125TTH Torch 8m (26.2')/Starter Kit	8 m	EX-6-010-001
EX-TRAFIRE®125HD/CE/3x400 V Hand System/FHT-EX®125TTH Torch 15m (49.2')/Starter Kit	15 m	EX-6-010-002
MECHANIZED PLASMA CUTTING SYSTEMS		
EX-TRAFIRE®125HD/CE/3x400 V Machine System/FULLY EQUIPPED/FHT-EX®125TTM 8m (26.2')/Starter Kit	8 m	EX-6-011-001
EX-TRAFIRE®125HD/CE/3x400 V Machine System/FULLY EQUIPPED/FHT-EX®125TTM 15m (26.2')/Starter Kit	15 m	EX-6-011-002
EX-TRAFIRE®125HD/CE/3x400 V Machine System/STD EQUIPPED/FHT-EX®125TTM 8m (26.2')/Starter Kit	8 m	EX-6-013-005
EX-TRAFIRE®125HD/CE/3x400 V Machine System/STD EQUIPPED/FHT-EX®125TTM 15m (26.2')/Starter Kit	15 m	EX-6-013-006
PLASMA CUTTING UNITS		
EX-TRAFIRE® 125HD/CE/3x400V (Fighter version) power supply unit/FULLY EQUIPPED		EX-6-001-002
EX-TRAFIRE® 125HD/CE/3x400V (Fighter version) power supply unit/STD EQUIPPED		EX-6-003-001

NOTE:

STD (standard) EQUIPPED - CNC-Port

FULLY EQUIPPED - CNC-Port & Serial Interface

ACCESSORIES

Description	Pcs	Part No.
DN 7.2 ES Quick Connect Plug with male thread G 1/4"	1	EX-0-802-001
DN 7.2 ES Quick Connect Coupling with male thread G 1/4"	1	EX-0-802-002
CNC Interface 14-pin Plug Kit	1	EX-0-803-001
CNC Interface connection lead 3 m	1	EX-0-803-003
CNC Interface connection lead 6 m	1	EX-0-803-004
Plasma Arc START/STOP Remote Controller for STD/FULLY EQUIPPED power supplies	1	EX-0-803-005
FILTER-EX Compressed Air Filter	1	EX-0-804-001
FILTER-EX Air Filter Cartridge	1	EX-0-804-002
Silicone Grease 25ml	1	EX-0-805-001
THERMACUT® Cutting Gloves	1	EX-0-806-001
CAN bus connection cable 10m (32.8')	1	EX-0-803-006
CAN bus connection cable 5m (16.4')	1	EX-0-803-007
RS422 bus connection cable 10m (32.8')	1	EX-0-803-008
RS422 bus connection cable 5m (16.4')	1	EX-0-803-009
Universal connection cable 10m (32.8')	1	EX-0-803-010
Universal connection cable 5m (16.4')	1	EX-0-803-011
Work lead with clamp 300A/4m/16mm2/EU-plug 35-70mm2	1	EX-5-543-037
Work lead with clamp 300A/23m/16mm2/EU-plug 35-70mm2	1	EX-5-543-003
Work lead with clamp 300A/15m/16mm2/EU-plug 35-70mm2	1	EX-5-543-002
Work lead with clamp 300A/8m/16mm2/EU-plug 35-70mm2	1	EX-5-543-001
EX-TRAFIRE®65-125HD CAN/RS Bus Upgrade Kit	1	EX-0-803-013

Last update of this page: 18/07/2023. See Revision history for details.

EX-TRAFIRE® 125HD



FRONT VIEW



BACK VIEW



SIDE VIEW

Last update of this page: 18/07/2023. See Revision history for details.

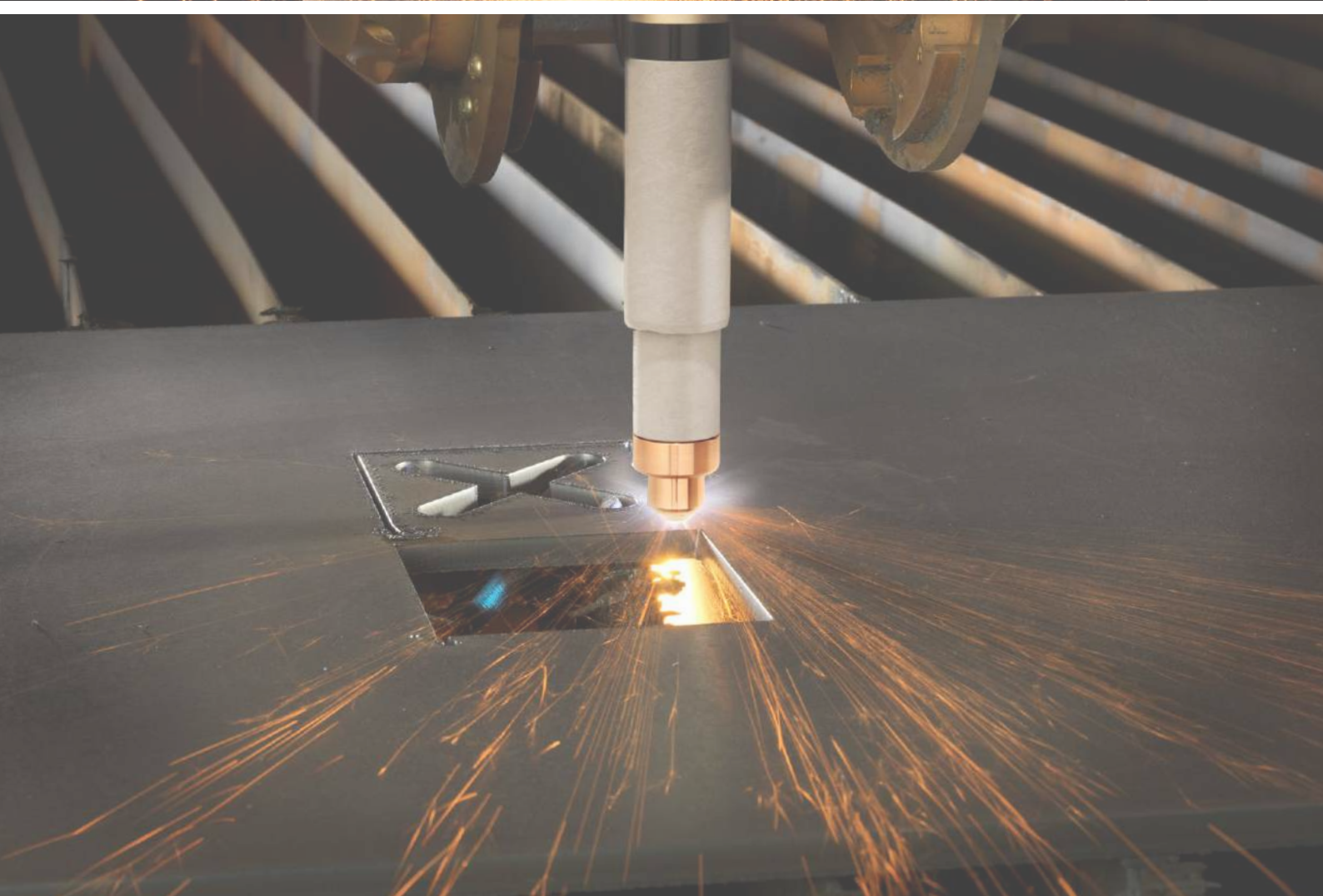
FHT-EX® 125TT

HAND / MACHINE TORCHES AND CONSUMABLES

SUITABLE FOR EX-TRAFIRE® 125HD



Last update of this page: 18/07/2023. See Revision history for details.



FHT-EX® 125TT



MAXIMUM PERFORMANCE

The high-performant FHT-EX®125TT H/M hand and machine torches are ideal for meeting tough demands in continuous operation. These torches are optimally designed for use with EX-TRAFIRE®105HD power supplies and are suitable for cutting, gouging, grid-cutting and marking. They can cut plate thickness of up to 60 mm and more precisely and quickly.

Thanks to the THERMACUT® Torch Connection System (TCS), changing the torch is a quick and easy process. The powerful torches are the result of decades of experience in the field of plasma cutting. They feature an extremely robust and durable design in which all consumables can be replaced quickly and easily.



BENEFITS

- High-performant torches for mechanised applications and handheld use
- Ergonomic handheld torches for safe and reliable holding and guiding in all positions
- Compact and flexible for handheld applications, even in the case of tight radii or gouging of fillet welds
- 100 % duty cycle at 125 A, ideal for continuous use
- Ideal for plate thicknesses of up to 60 mm and more with high power reserves
- Consumables with an extended lifetime
- Quick and tool-free replacement of consumables
- Piercing 25+ mm
- Perfectly designed for use with EX-TRAFIRE®125HD power supplies

Last update of this page: 18/07/2023. See Revision history for details.

FHT-EX® 125TTH

HAND TORCH ASSEMBLY



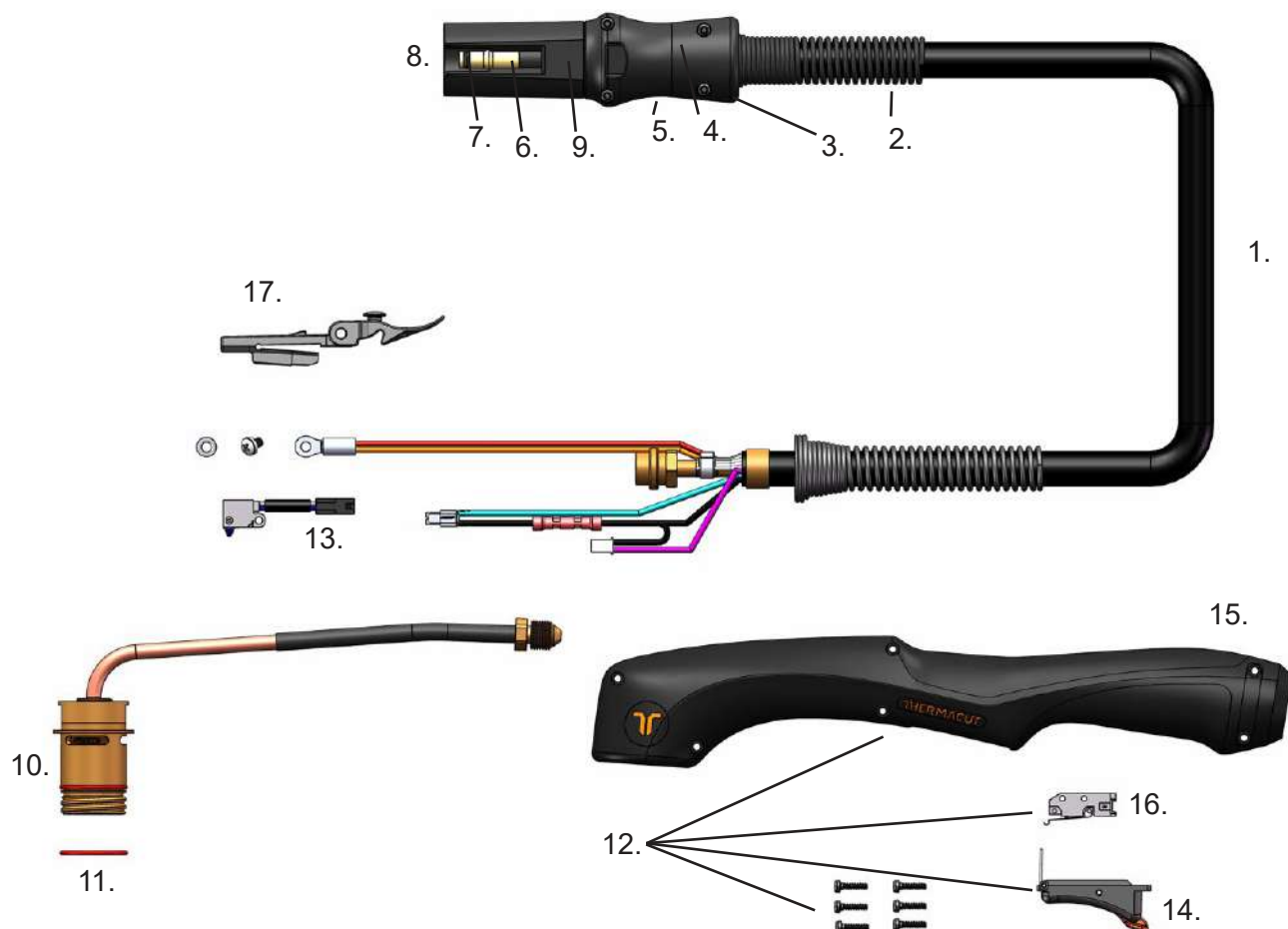
Item	Part No.	Description	Pcs
NS	EX-6-133-001	DEMO FHT-EX®125TTH Hand Torch Assembly/TCS13	1
1.	EX-6-139-001	FHT-EX®125TTH Hand Torch Assembly-w/o consumables w/5m (16.5')Lead/TCS13	1
1.	EX-6-139-002	FHT-EX®125TTH Hand Torch Assembly-w/o consumables w/8m (26.2') Lead/TCS13	1
1.	EX-6-139-003	FHT-EX®125TTH Hand Torch Assembly-w/o consumables w/15m (49.2') Lead/TCS13	1
1.	EX-6-139-004	FHT-EX®125TTH Hand Torch Assembly-w/o consumables w/23m (75.5') Lead/TCS13	1
2.	EX-0-321-003	Latch with Key Assembly	1

⊕ LATCH WITH KEY IS NOT CONTENT OF TORCHES ABOVE. IF YOU NEED IT, YOU HAVE TO ORDER SEPARATELY.

Last update of this page: 18/07/2023. See Revision history for details.

FHT-EX® 125TTH

HAND TORCH COMPONENTS

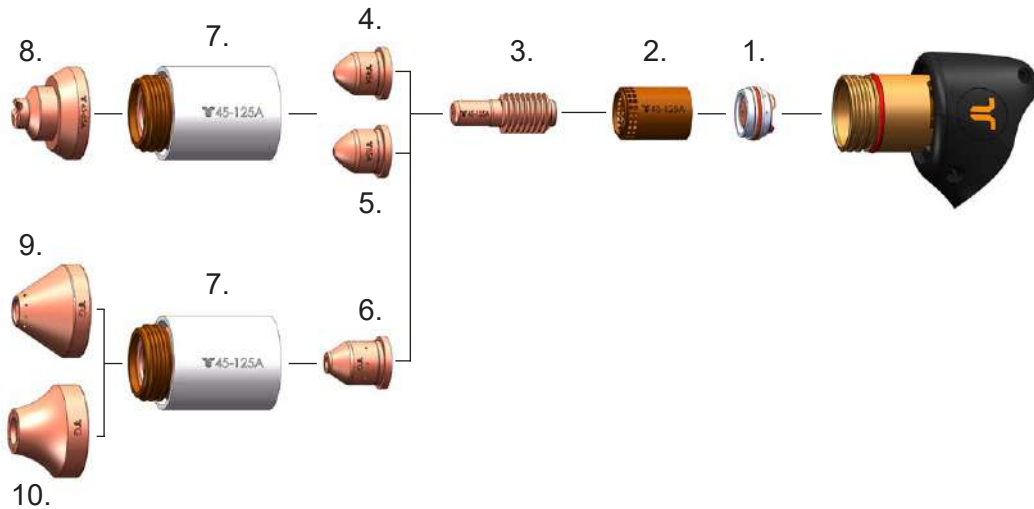


Item	Part No.	Description	Pcs	Item	Part No.	Description	Pcs
1.	EX-6-374-001	FHT-EX®125TTH Hand Torch Lead Replacement 5m (16.5')/TCS13	1	8.	EX-0-325-005	Male Crimp Pin for TCS Plug	1
1.	EX-6-374-002	FHT-EX®125TTH Hand Torch Lead Replacement 8m (26.2')/TCS13	1	9.	EX-0-323-001	TCS13 Plug Body	1
1.	EX-6-374-003	FHT-EX®125TTH Hand Torch Lead Replacement 15m (49.2')/TCS13	1	10.	EX-6-302-001	Hand Torch Body	1
1.	EX-6-374-004	FHT-EX®125TTH Hand Torch Lead Replacement 23m (75')/TCS13	1	11.	EX-6-431-001	O-Ring (fitted on the torch body) - 2 pcs	1
2.	EX-6-306-004	TCS Plug Spring Strain Relief	1	12.	EX-6-314-001	Hand Torch Handle Replacement Kit	1
3.	EX-0-325-015	TCS Clam Shell Screw Kit (incl. 4 screws)	1	13.	EX-5-305-001	Cap-sensor Replacement Kit with Screws/ Hand Torch	1
4.	EX-0-325-002	TCS Clam Shell Upper	1	14.	EX-5-313-031	Safety Trigger	1
5.	EX-0-325-001	TCS Clam Shell Lower	1	15.	EX-6-308-001	Hand Torch Handle with Screws (6pcs)	1
6.	EX-0-325-010	Retaining Ring (Outer circlip ring)	1	16.	EX-5-313-030	Safety Trigger Micro-Switch	1
7.	EX-0-325-009	O-Ring (fitted in the TCS plug)	1	17.	EX-0-321-003	Latch w/Key Assembly	1

Last update of this page: 18/07/2023. See Revision history for details.

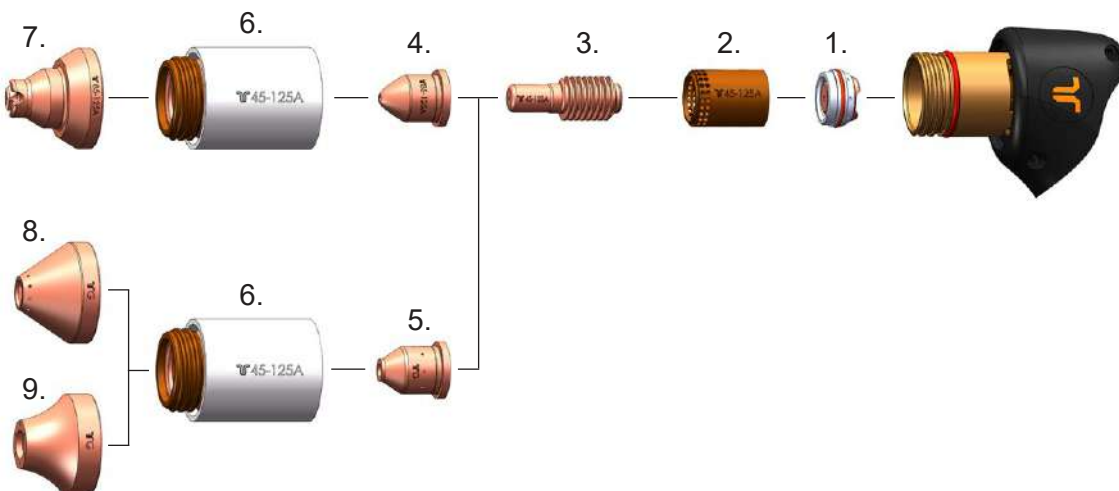
CONSUMABLES

HAND TORCH CONSUMABLES - 45-65 A



Item	Part No.	Description	Pcs	Item	Part No.	Description	Pcs
1.	EX-6-446-001	Swirl Ring Holder	1	6.	EX-6-440-020	Gouging Nozzle	1
2.	EX-6-404-021	Swirl Ring 45-125A	1	7.	EX-6-415-021	Retaining Cap 45-125A	1
3.	EX-6-401-021	Electrode 45-125A (5pcs package)	1	8.	EX-6-419-022	Shield 45-65A, Hand	1
4.	EX-6-409-024	Nozzle 45A	1	9.	EX-6-440-023	Gouging Shield, Standard	1
5.	EX-6-409-023	Nozzle 65A	1	10.	EX-6-440-024	Gouging Shield, High Removal	1

HAND TORCH CONSUMABLES - 85-125 A

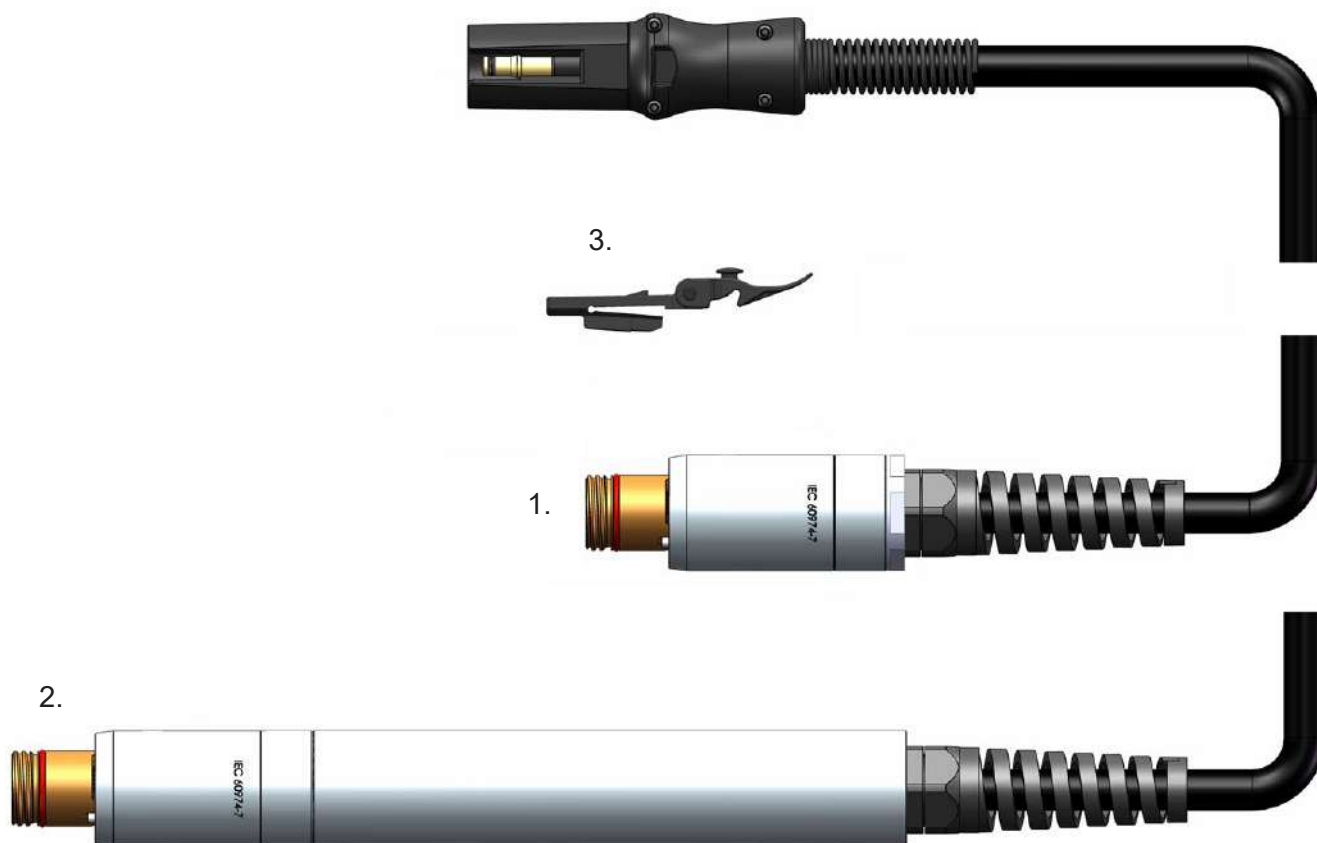


Item	Part No.	Description	Pcs	Item	Part No.	Description	Pcs
1.	EX-6-446-001	Swirl Ring Holder	1	5.	EX-6-415-021	Retaining Cap 45-125A	1
2.	EX-6-404-021	Swirl Ring 45-125A	1	6.	EX-6-419-021	Shield 85-125A, Hand	1
3.	EX-6-401-021	Electrode 45-125A (5pcs package)	1	7.	EX-6-440-023	Gouging Shield, Standard	1
4.	EX-6-409-021	Nozzle 85-125A	1	8.	EX-6-440-024	Gouging Shield, High Removal	1
5.	EX-6-440-020	Gouging Nozzle	1				

Last update of this page: 18/07/2023. See Revision history for details.

FHT-EX® 125TTM

MACHINE TORCH ASSEMBLY



Item	Part No.	Description	Pcs
NS	EX-6-233-001	DEMO FHT-EX®125TTM Machine Torch Assembly/TCS13	1
NS	EX-6-234-001	DEMO FHT-EX®125TTSM Short Machine Torch Assembly/TCS13	1
1.	EX-6-272-001	FHT-EX®125TTSM Short Machine Torch Assembly-w/o consumables w/5m (16.5') Lead/TCS13	1
1.	EX-6-272-002	FHT-EX®125TTSM Short Machine Torch Assembly-w/o consumables w/8m (26.2') Lead/TCS13	1
1.	EX-6-272-003	FHT-EX®125TTSM Short Machine Torch Assembly-w/o consumables w/15m (49.2') Lead/TCS13	1
1.	EX-6-272-004	FHT-EX®125TTSM Short Machine Torch Assembly-w/o consumables w/23m (75.5') Lead/TCS13	1
2.	EX-6-270-001	FHT-EX®125TTM Machine Torch Assy w/o consumables w/5m (16.5')Lead/TCS13	1
2.	EX-6-270-002	FHT-EX®125TTM Machine Torch Assy w/o consumables w/8m (26.2') Lead/TCS13	1
2.	EX-6-270-003	FHT-EX®125TTM Machine Torch Assy w/o consumables w/15m (49.2') Lead/TCS13	1
2.	EX-6-270-004	FHT-EX®125TTM Machine Torch Assy w/o consumables w/23m (75.5') Lead/TCS13	1
3.	EX-0-321-003	Latch with Key Assembly	1

⚠ LATCH WITH KEY IS NOT CONTENT OF TORCHES ABOVE. IF YOU NEED IT, YOU HAVE TO ORDER SEPARATELY.

Last update of this page: 18/07/2023. See Revision history for details.